

HIGH DEMAND FOR POLY GRADS AMIDST ECONOMIC DOWNTURN

Overall employment rate remains high with competitive salaries

Singapore, 6 January 2010 – The latest Graduate Employment Survey, conducted in 2009 by the five polytechnics, revealed that about 9 in 10 fresh and post-National Service (NS) graduates were currently employed amidst the economic downturn.

Last year's overall employment rate stayed high despite the downward trend over the last 3 years (Appendix 1). The average gross monthly salaries¹ remained competitive at \$1,776 for fresh graduates and \$2,130 for post-NS graduates in full-time permanent employment.

There was a growing proportion of poly graduates in part-time or temporary jobs as these graduates decided to pursue further studies and upgrade their skills.

The majority of graduates were employed in the private sector but there was an increasing trend of graduates joining the public sector.

The 2009 survey findings reaffirmed that the polytechnic graduates, in spite of the impact brought about by the recession, remained in demand to the labor market.

Fresh Graduates

Some 8,509 fresh graduates took part in the Survey. As at 1 October 2009, overall employment rate remained high at **88.3%** in spite of the slight decrease over the last 3 years. About **62.6%** of economically active² fresh graduates were in full-time permanent employment³. Part-time or temporary employment rate was **25.7%** with an increasing trend over the past three years.

The average gross monthly salary among fresh graduates in full-time permanent employment was **\$1,776**. Of the fresh graduates with full-time permanent jobs, 81.1% were employed in the private sector while the remaining 18.9% were in the public sector. An upward trend of public sector employment was seen over the past three years.

¹ Gross monthly salary includes fixed allowances, overtime pay, and commissions of graduates who had full-time permanent jobs as at 1 October 2009. Bonuses were excluded.

² Economically active graduates refer to those who were working or looking for employment.

³ Full-time permanent employment refers to employment of at least 35 hours a week and where the employment is not temporary. It includes those on contracts of one year or more.

Post-National Service Graduates

Among the 2,869 post-NS respondents, overall employment rate was still relatively high at **87.7%** despite the slight decline since 2007. The proportion of economically active post-NS graduates holding full-time permanent jobs was **71.1%**. Similar to fresh graduates, part-time or temporary employment (**16.6%**) among post-NS graduates increased over the past 3 years.

Post-NS graduates in full-time permanent employment were earning a competitive average gross monthly salary of **\$2,130** despite the marginal drop over the last three years.

Of the post-NS graduates with full-time permanent jobs, 72.7% joined the private sector while the remaining 27.3% took up jobs in the public sector. An upward trend of public sector employment was seen from 2007 to 2009.

Monthly Salaries by Course Categories

Among fresh graduates in full-time permanent jobs, the significantly highest reported earners were from the Maritime category. Among post-NS graduates in full-time permanent jobs, the following commanded higher salaries: Chemical & Life Sciences, Accountancy, Business, Finance & Law, Maritime and Engineering.

Course Category	Fresh Graduates		Post-NS Graduates	
	Basic*	Gross+	Basic*	Gross+
Accountancy, Business, Finance & Law	\$1,650	\$1,720	\$2,069	\$2,190
Built Environment	\$1,674	\$1,740	\$1,953	\$2,102
Chemical & Life Sciences	\$1,751	\$1,813	\$2,187	\$2,302
Engineering (Electrical & Electronic)	\$1,715	\$1,804	\$1,993	\$2,101
Engineering (Mechanical & Manufacturing)	\$1,711	\$1,830	\$1,997	\$2,148
Health Sciences	\$1,720	\$1,813	\$1,887	\$1,962
Information Technology	\$1,685	\$1,761	\$1,960	\$2,082
Maritime	\$1,801	\$1,970	\$2,055	\$2,221
Media & Design	\$1,588	\$1,642	\$1,967	\$1,981
All Courses	\$1,694	\$1,776	\$2,011	\$2,130

* Basic Salary refers to the average monthly salary of graduates who were working in full time permanent jobs as at 1 October 2009. Fixed allowances were included. Bonuses were excluded.

+ Gross Salary refers to the average basic salary plus overtime pay and commissions of graduates who were working in full-time permanent jobs as at 1 October 2009. Bonuses were excluded.

Background Facts about the Survey

- The annual Graduate Employment Survey is jointly conducted by Nanyang, Ngee Ann, Republic, Singapore and Temasek polytechnics to ascertain the employment status of polytechnic graduates.
- The 2009 Survey was administered between October and December 2009 and, attracted a total of 11,378 respondents. They were asked to respond based on their employment status on 1 October 2009.
- The respondents comprised fresh graduates who completed their studies in 2009 and were not liable for National Service after graduation, and Post-NS graduates of 2006 who completed their full-time National Service between 1 April 2008 and 31 March 2009.

A more detailed report of the survey findings can be found in Appendix I.

Media Release Issued by

Singapore Polytechnic

Ms Teo Hung Noi

Tel: 6772-1350 / 9670-9088

Email: hungnoi@sp.edu.sg

Mr Andy Kwan

Tel: 6772 1742 / 9761 6111

Email: andykwan@sp.edu.sg

Other Media Contacts

Nanyang Polytechnic

Ms Jayanthi Gopal

Tel: 6550 0223 / 9665 7817

Email: Jayanthi_gopal@nyp.edu.sg

Ngee Ann Polytechnic

Ms Sadiah Ahmad

Tel: 6460 6232 / 8367 0286

Email: Sadia@np.edu.sg

Republic Polytechnic

Mr Pandiyan

Tel: 3100 1267

Email: Pandiyan@rp.sg

Temasek Polytechnic

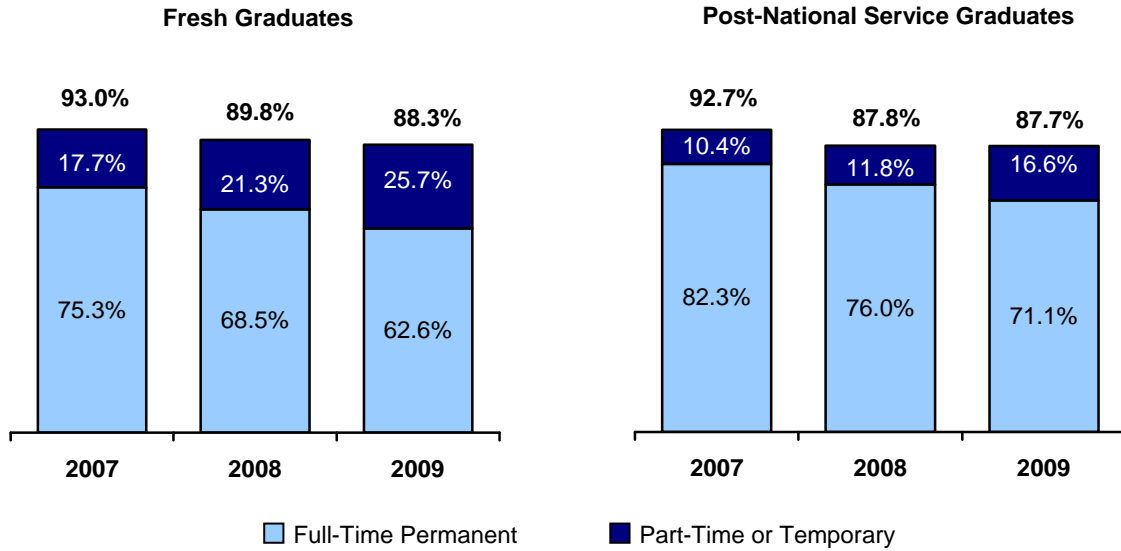
Ms Vimala Christie

Tel: 6780 5019 / 9790 0319

Email: vimalac@tp.edu.sg

APPENDIX I: KEY EMPLOYMENT INDICATORS

Exhibit 1. Employment Rate

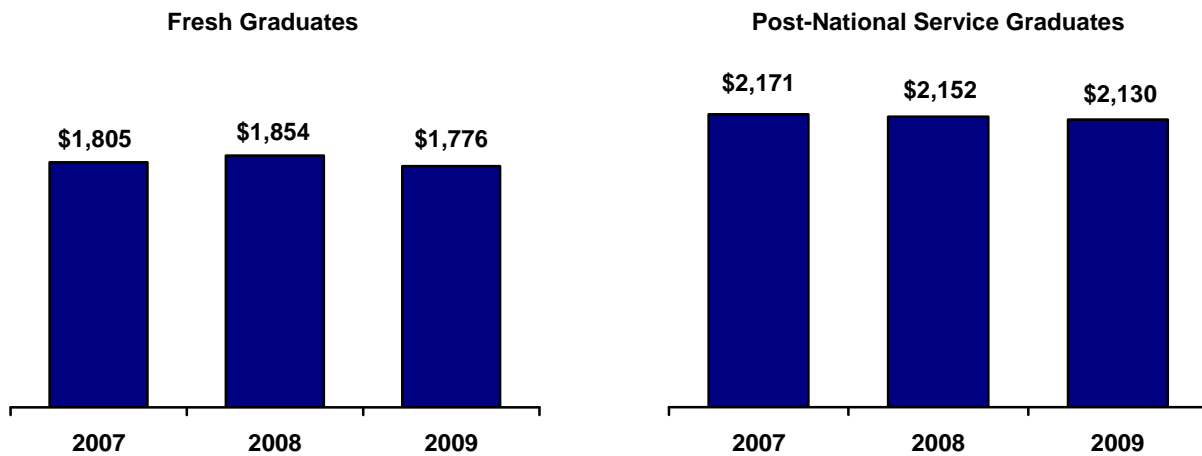


Full-time Permanent Employment refers to employment of at least 35 hours a week and where the employment is not temporary. It includes those on contracts of one year or more.

Part-time Employment refers to employment of less than 35 hours a week.

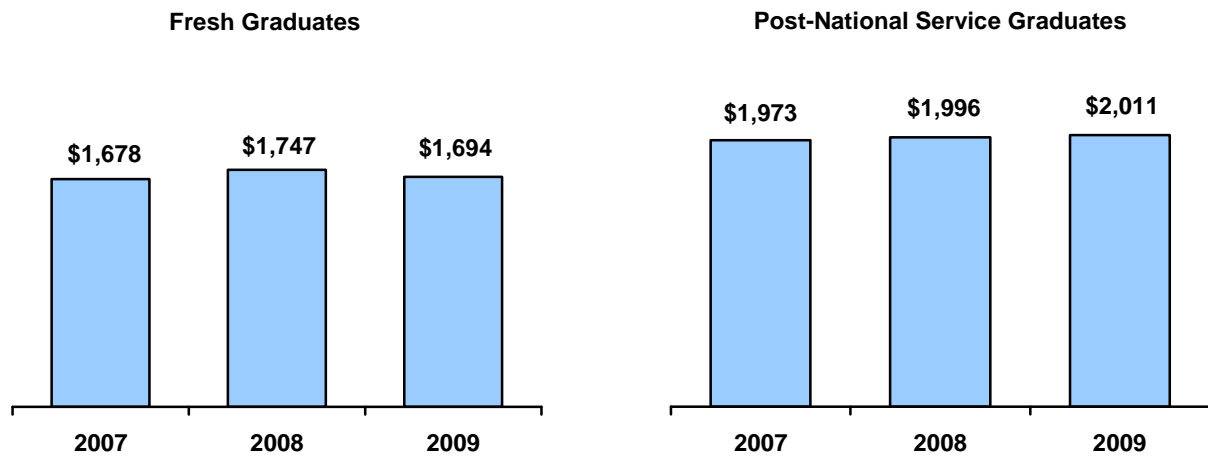
Temporary Employment refers to casual, interim or seasonal employment, including those on contracts of less than one year.

Exhibit 2. Gross Monthly Salary of Graduates in Full-Time Permanent Employment



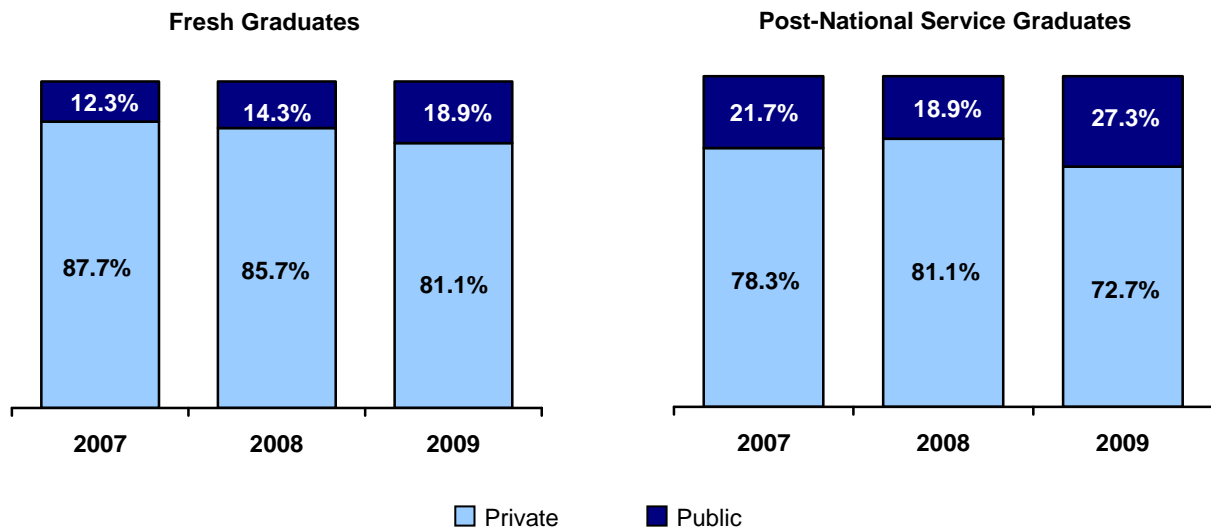
Gross Salary refers to the average basic salary plus overtime pay and commissions of graduates who were working in full-time permanent jobs as at 1st October of each year. Bonuses were excluded.

Exhibit 3. Basic Salary of Graduates in Full-Time Permanent Employment



Basic Salary refers to the average monthly salary of graduates who were working in full time permanent jobs as at 1st October of each year. Fixed allowances were included.

Exhibit 4. Employment Sector of Graduates in Full-Time Permanent Employment



LIST OF DIPLOMA COURSES INVOLVED IN THE SURVEY

ACCOUNTANCY, BUSINESS, FINANCE & LAW

Accountancy; Accountancy & Finance; Accounting & Finance (NYP, NP, SP, TP)
 Banking & Financial Services; Financial Services (NYP, NP, SP)
 Business; Business Administration; Business Management; Business Studies (NYP, NP, SP, TP)
 Communications & Media Management; Media Studies (NYP,TP)
 Chinese Studies (NP)
 Culinary & Catering Management (TP)
 Early Childhood Education (NP)
 Hospitality & Resort Management; Hospitality & Tourism Management; Hospitality Management; Integrated Events Management; Leisure & Resort Management; Tourism & Resort Management; Tourism Management (NYP, NP, RP, SP, TP)
 Law & Management (TP)
 Logistics & Operations Management (TP)
 Marketing; Retail Management (NYP, TP)
 Sports & Leisure Management; Sport & Wellness (NYP, RP)

BUILT ENVIRONMENT

Architecture (SP)
 Building & Real Estate Management; Building & Property Management; Real Estate Business (NP, SP)
 Building Services Engineering (NP)
 Civil & Environmental Engineering; Civil & Structural Engineering (NP, SP)
 Facilities Management for Business; Integrated Facility Design & Management; Property Development & Facilities Management (NP, SP, TP)
 Landscape Architecture (SP)

CHEMICAL & LIFE SCIENCE & OTHER SCIENCES

Applied Food Science & Nutrition; Food Science (NYP,TP)
 Biotechnology; Molecular Biotechnology (NYP, NP, RP, SP, TP)
 Biomedical Lab Technology; Biomedical Science; Biomedical Sciences (NP, RP, SP, TP)
 Chemical & Biomolecular Engineering; Chemical Engineering (NP, SP, TP)
 Chemical & Pharmaceutical Technology (NYP)
 Chemical Process Technology (SP)
 Consumer Science & Technology (TP)
 Horticulture & Landscape Management (NP)
 Materials Science (RP)
 Medical Technology (SP)
 Optometry (SP)
 Pharmacy Science; Pharmaceutical Sciences (NP, RP)

ENGINEERING (ELECTRICAL & ELECTRONIC)

Aerospace Avionics; Aerospace Electronics (RP, SP)
 Bioelectronics; Biomedical Electronics; Biomedical Electronics Engineering; Biomedical Engineering; Biomedical Informatics & Engineering (NP, RP, SP, TP)
 Business Process & Systems Engineering; Industrial & Systems Engineering (RP, TP)
 Computer & Network Technology (SP)
 Computer Engineering; Electronics; Electronic & Computer Engineering, Electronic & Telecommunication Engineering; Communications and Automation Electronics; Electronics, Computer & Communications Engineering; Electronics Engineering; Microelectronics; Tele-communications (NYP, NP, RP, SP, TP)
 Electrical & Electronic Engineering; Electrical Engineering (NP, SP)
 Industrial and Operations Management; Industrial and Systems Engineering; Information Communication Technology; Info-Communications (RP, SP, TP)
 Intelligent Building Technology (TP)
 Multimedia & InfoComm Technology (NYP)

ENGINEERING (MECHANICAL & MANUFACTURING)

Aeronautical Engineering; Aerospace Technology (NP, SP)
 Bioengineering; Biomedical Engineering (NYP, SP)
 Logistics Engineering & Management; Logistics Management; Supply Chain Management (NP, RP)
 Manufacturing Engineering (NYP)
 Mechanical Engineering (NP, SP)
 Mechatronic Engineering; Mechatronics; Mechatronics Engineering (NYP, NP, SP, TP)
 Product Design & Innovation; Product Engineering (NP,TP)
 Quality Engineering and Management; Quality Management & Engineering; (NP, TP)

HEALTH SCIENCES

Dental Hygiene & Therapy (NYP)
 Diagnostic Radiography; Radiation Therapy (NYP)
 Health Sciences (Nursing); Nursing (NYP, NP)
 Occupational Therapy (NYP)
 Physiotherapy (NYP)
 Sports & Exercise Sciences (RP)

INFORMATION TECHNOLOGY

Business Application; Business Computing; Business Informatics; Business Information Technology (NYP, NP, RP, SP, TP)
 Cyber & Digital Security; Infocomm Security Management; Network Systems and Security (NP, SP, TP)
 Digital Entertainment Technology; Game & Entertainment Technology (NYP, TP)
 Digital Media; Interactive & Digital Media; Internet & Multimedia Development; Multimedia & Animation; Multimedia Computing; Multimedia Technology; (NP, RP, SP, TP)
 Engineering Informatics (NYP, NP)
 Financial Business Informatics (TP)
 Games Design & Development (SP)
 Information Management; Information Technology; (NYP, NP, RP, SP, TP)
 Information Technology (Mobile Computing); Mobile & Wireless Computing; Mobile Business Solutions (NP, TP)
 Internet Computing (TP)
 Internetworking & Communications (NP)
 IT Service Management (RP)
 Music & Audio Technology; Sonic Arts (RP, SP)

MARITIME

Marine & Offshore Technology (NP)
 Marine Engineering (SP)
 Maritime Transportation Management (SP)
 Nautical Studies (SP)

MEDIA & DESIGN

Apparel Design & Merchandising (TP)
 Creative Media Design; Visual Communication (SP, TP)
 Digital Media Design; Film, Sound & Video; Moving Images (NYP,NP, TP)
 Industrial Design; Product & Industrial Design (NYP, TP)
 Interactive Media Design (TP)
 Interior Architecture & Design; Interior Design (SP, TP)
 Mass Communication; Media & Communication; New Media (NP, RP, SP)
 Technology and Arts Management (RP)