

OVER 90% OF POLY GRADS EMPLOYED IN 2010

Latest survey shows an increase in the employment rate and salaries of fresh and post-NS graduates compared to 2009

Singapore, 11 January 2011 – The Graduate Employment Survey conducted in 2010 by the five polytechnics revealed that polytechnic graduates continue to do well in the workforce and are well sought-after by employers. The outcomes are also a strong affirmation of the value of a polytechnic education placed by employers in Singapore.

The survey showed an increase in the employment rate and gross monthly salaries for both fresh graduates and post-NS graduates, compared to the 2009 survey. These increases are in line with the improved economic outlook for Singapore.

Looking at the overall employment rate, more than 90% of polytechnic graduates were in the workforce as at 1 October 2010. The survey also showed that there were higher percentages of graduates employed in full-time permanent jobs compared to 2009.

A higher proportion of fresh graduates chose to join the private sector in 2010 compared to 2009, while the proportion of private-to-public sector employment for post-NS graduates remained largely unchanged.

The average gross monthly salaries¹ among fresh graduates had risen by 5.3% to \$1,871 in 2010, while the post-NS graduates earned an average gross monthly salary of \$2,183.

Fresh Graduates

A total of 9,282 fresh graduates took part in the Survey. As at 1 October 2010, the overall employment rate reached **91.5%**, increasing by 3 percentage points compared to 88.5% in 2009. Among the economically active² fresh graduates, **68.5%** were in full-time permanent employment³, growing from 62.8% in 2009 (refer to Appendix: Exhibit 1).

The average gross monthly salary among fresh graduates in full-time permanent employment was **\$1,871** which represents a 5.3% increase compared to **\$1,776** in 2009 (refer to Appendix: Exhibit 2).

¹ Gross monthly salary includes fixed allowances, overtime pay, and commissions of graduates who had full-time permanent jobs as at 1 October 2010. Bonuses were excluded.

² Economically active graduates refer to those who were working or looking for employment.

³ Full-time permanent employment refers to employment of at least 35 hours a week and where the employment is not temporary. It includes those on contracts of one year or more.

Of the fresh graduates with full-time permanent jobs, 86.4% were employed in the private sector while 13.6% were in the public sector. A higher proportion of graduates joined the private sector compared to 81.2% in 2009 (refer to Appendix: Exhibit 4).

Post-National Service Graduates

Among the 3,225 post-NS respondents, the overall employment rate was **95.4%**, an increase of 7.7 percentage points from 87.7% in 2009. The proportion of economically active post-NS graduates holding full-time permanent jobs was **81.3%**, rising significantly from 71.1% in 2009 (refer to Appendix: Exhibit 1).

Post-NS graduates in full-time permanent employment earned an average gross monthly salary of **\$2,183** (refer to Appendix: Exhibit 2).

Of the post-NS graduates with full-time permanent jobs, 73.4% joined the private sector while the remaining 26.6% took up jobs in the public sector (refer to Appendix: Exhibit 4).

Monthly Salaries by Course Categories

The fresh graduates in full-time permanent employment from the course categories of Maritime, Engineering (Mechanical & Manufacturing) and Health Sciences, commanded higher gross salaries. The post-NS graduates from the Accountancy, Business, Finance & Law, Maritime and Chemical & Life Sciences course categories commanded higher gross salaries.

Course Category	Fresh Graduates		Post-NS Graduates	
	Basic*	Gross+	Basic*	Gross+
Accountancy, Business, Finance & Law	\$1,714	\$1,821	\$2,056	\$2,362
Built Environment	\$1,737	\$1,833	\$2,063	\$2,163
Chemical & Life Sciences	\$1,750	\$1,840	\$2,037	\$2,221
Engineering (Electrical & Electronic)	\$1,778	\$1,918	\$1,992	\$2,134
Engineering (Mechanical & Manufacturing)	\$1,809	\$1,971	\$2,011	\$2,105
Health Sciences	\$1,812	\$1,935	\$1,973	\$2,043
Information Technology	\$1,729	\$1,810	\$2,013	\$2,190
Maritime	\$1,808	\$1,996	\$2,043	\$2,305
Media & Design	\$1,689	\$1,731	\$2,029	\$2,138
All Courses	\$1,759	\$1,871	\$2,016	\$2,183

* Basic salary refers to the average monthly salary of graduates who were working in full time permanent jobs as at 1 October 2010. Fixed allowances were included. Bonuses were excluded.

+ Gross salary refers to the average basic salary plus overtime pay and commissions of graduates who were working in full-time permanent jobs as at 1 October 2010. Bonuses were excluded.

Background Facts about the Survey

- The annual Graduate Employment Survey is jointly conducted by Nanyang, Ngee Ann, Republic, Singapore and Temasek polytechnics to ascertain the employment status of polytechnic graduates.
- The 2010 Survey was conducted between October and November 2010 and attracted a total of 12,507 respondents. They were asked to respond based on their employment status on 1 October 2010.
- The respondents comprised fresh graduates who completed their studies in 2010 and were not liable for National Service after graduation, and Post-NS graduates of 2007 who completed their full-time National Service between 1 April 2009 and 31 March 2010.

More details of the survey findings can be found in Appendix I.

Media Release Issued by

Ngee Ann Polytechnic

Ms Sadiyah Ahmad
Tel: 6460 6232 / 8367 0286
Email: sadia@np.edu.sg

Other Media Contacts

Nanyang Polytechnic

Ms Jayanthi Gopal
Tel: 6550 0223 / 9665 7817
Email: jayanthi_gopal@nyp.edu.sg

Singapore Polytechnic

Ms Teo Hung Noi
Tel: 6772-1350 / 9670-9088
Email: hungnoi@sp.edu.sg

Republic Polytechnic

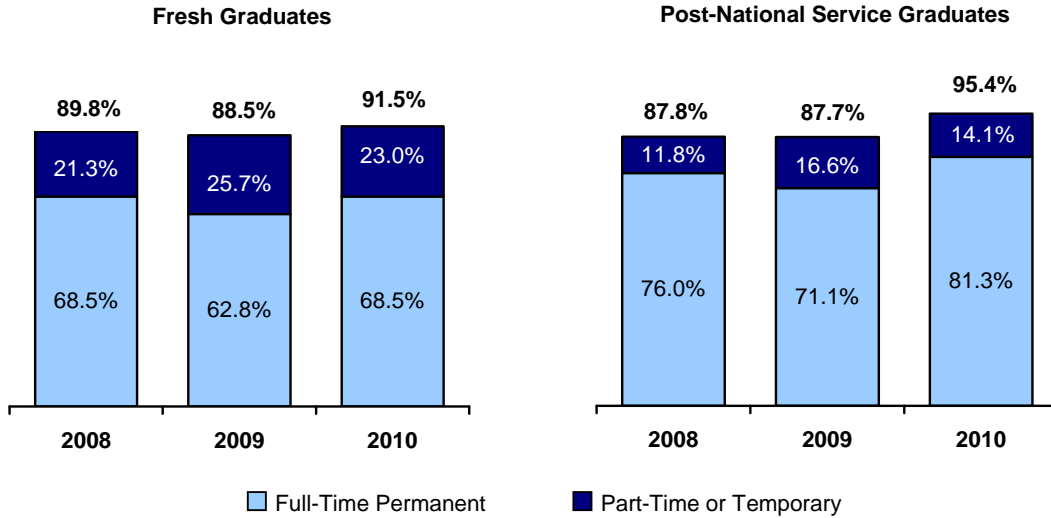
Mr Pandiyan
Tel: 3100 1267
Email: pandiyan@rp.sg

Temasek Polytechnic

Ms Vimala Christie
Tel: 6780 5019 / 9790 0319
Email: vimalac@tp.edu.sg

APPENDIX I: KEY EMPLOYMENT INDICATORS

Exhibit 1. Employment Rate

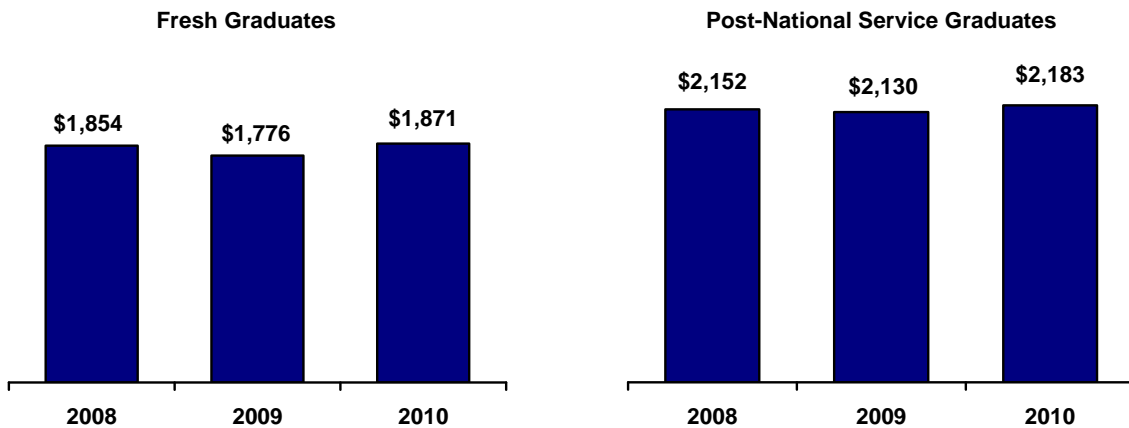


Full-time Permanent Employment refers to employment of at least 35 hours a week and where the employment is not temporary. It includes those on contracts of one year or more.

Part-time Employment refers to employment of less than 35 hours a week. Prior to 2009, part-time employment refers to employment of less than 30 hours per week.

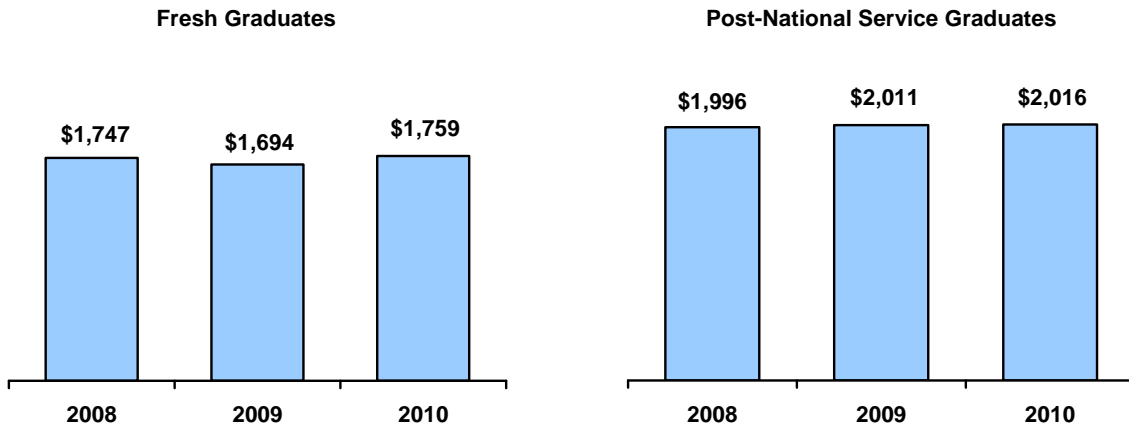
Temporary Employment refers to casual, interim or seasonal employment, including those on contracts of less than one year.

Exhibit 2. Gross Monthly Salary of Graduates in Full-Time Permanent Employment



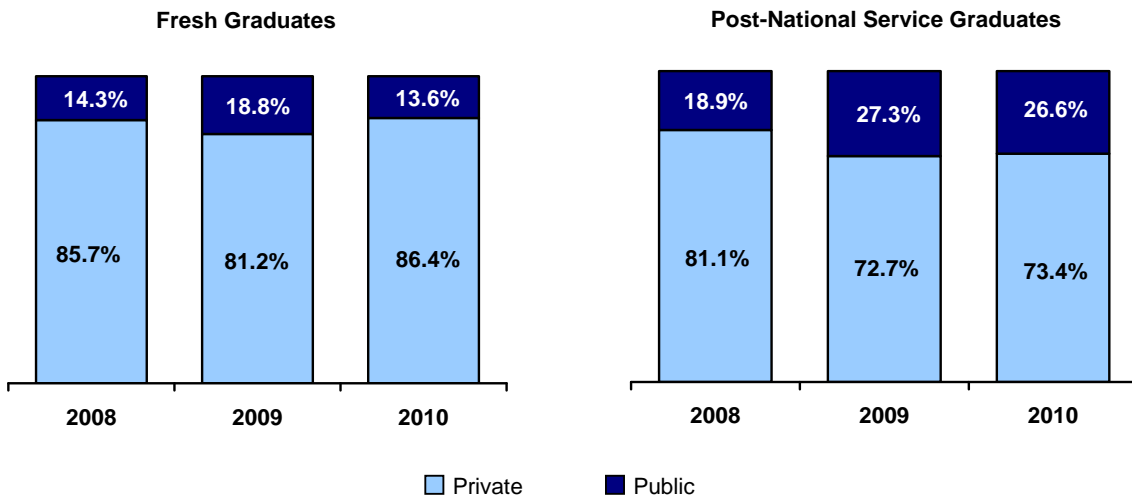
Gross Salary refers to the average basic salary plus overtime pay and commissions of graduates who were working in full-time permanent jobs as at 1 October of each year. Bonuses were excluded.

Exhibit 3. Basic Salary of Graduates in Full-Time Permanent Employment



Basic Salary refers to the average monthly salary of graduates who were working in full time permanent jobs as at 1 October of each year. Fixed allowances were included. Bonuses were excluded.

Exhibit 4. Employment Sector of Graduates in Full-Time Permanent Employment



LIST OF DIPLOMA COURSES INVOLVED IN THE SURVEY

ACCOUNTANCY, BUSINESS, FINANCE & LAW

Accountancy; Accountancy & Finance; Accounting & Finance (NYP, NP, SP, TP)
 Banking & Financial Services; Financial Services (NYP, NP, SP)
 Business; Business Administration; Business Management; Business Studies; (NYP, NP, SP, TP)
 Chinese Studies (NP)
 Communications & Media Management; Media Studies & Management (NYP, TP)
 Culinary & Catering Management (TP)
 Customer Relationship and Service Management (RP)
 Early Childhood Education (NP)
 Hospitality and Resort Management; Hospitality & Tourism Management; Integrated Events Management; Tourism & Resort Management; Leisure & Resort Management (NYP, NP, RP, SP, TP)
 Law & Management (TP) Logistics & Operations Management (TP)
 Marketing; Retail Management (NYP, TP)
 Psychology & Community Services (NP)
 Sports & Leisure Management; Sport & Wellness Management (NYP, RP)

BUILT ENVIRONMENT

Architecture (SP) Aviation Management & Services (TP)
 Building & Real Estate Management; Building & Property Management; Real Estate Business (NP, SP)
 Civil & Environmental Engineering; Civil & Structural Engineering (NP, SP)
 Facilities Management for Business; Integrated Facility Design & Management; Property Development & Facilities Management (NP, SP, TP)
 Integrated Events & Project Management (SP)
 Landscape Architecture (SP)

CHEMICAL & LIFE SCIENCES & OTHER SCIENCES

Applied Food Science & Nutrition; Food Science (NYP, TP)
 Baking & Culinary Science (TP)
 Biotechnology; Molecular Biotechnology (NYP, NP, RP, SP, TP)
 Biomedical Lab Technology; Biomedical Science; Biomedical Sciences (NP, RP, SP, TP)
 Chemical & Biomolecular Engineering; Chemical Engineering (NP, SP, TP) Chemical & Pharmaceutical Technology (NYP)
 Chemical Process Technology (SP)
 Consumer Science & Technology (TP)
 Environmental Science (RP)
 Horticulture & Landscape Management (NP)
 Materials Science (RP) Medical Technology (SP) Optometry (SP)
 Pharmacy Science; Pharmaceutical Sciences (NYP, NP, RP)
 Veterinary Technology (TP)

ENGINEERING (ELECTRICAL & ELECTRONIC)

Aerospace Avionics; Aerospace Electronics (NP, RP, SP)
 Audio-Visual Technology (NP)
 Bioelectronics; Biomedical Electronics; Biomedical Electronics Engineering; Biomedical Engineering; Biomedical Informatics & Engineering (NP, RP, SP, TP)
 Business Process & Systems Engineering; Industrial & Systems Engineering (RP, TP)
 Computer & Network Technology, Computer Engineering (SP)
 Computer Engineering; Electrical & Computer Control Engineering; Electronics; Electronic & Computer Engineering, Electronic & Telecommunication Engineering; Electronics & Communication Engineering; Communications and Automation Electronics; Electronics, Computer & Communications Engineering; Electronics Engineering; Microelectronics; Media & Communication Technology; Telecommunications (NYP, NP, RP, SP, TP)
 Electrical & Electronic Engineering; Electrical Engineering (NP, SP)
 Industrial and Operations Management; Industrial and Systems Engineering (RP)
 Info-Communications; Information Communication Technology (SP, TP) Intelligent Building Technology (TP)
 Micro and Nanotechnology (RP)
 Multimedia & InfoComm Technology (NYP)

ENGINEERING (MECHANICAL & MANUFACTURING)

Aeronautical Engineering; Aerospace Technology (NP, SP)
 Bioengineering; Biomedical Engineering (NYP, SP)
 Business Process & Quality Engineering; Quality Management & Engineering (NP)
 Environmental & Water Technology; Environmental Management & Water Technology (NP, SP)
 Experience & Product Design; Product Design & Innovation (NP, SP)
 Logistics Engineering & Management; Logistics Management; Supply Chain Management (NP, RP)
 Manufacturing Engineering (NYP)
 Mechanical Engineering (NP, SP)
 Mechatronic Engineering; Mechatronics; Mechatronics Engineering (NYP, NP, SP, TP)

HEALTH SCIENCES

Dental Hygiene & Therapy (NYP)
 Diagnostic Radiography; Radiation Therapy (NYP)
 Health Sciences (Nursing); Nursing (NYP, NP)
 Occupational Therapy (NYP)
 Outdoor & Adventure Learning (RP)
 Physiotherapy (NYP)
 Sports & Exercise Sciences (RP)

INFORMATION TECHNOLOGY

Business Application; Business Computing; Business Informatics; Business Information Technology (NYP, NP, RP, SP, TP)
 Business Enterprise IT (NYP)
 Cyber & Digital Security; Infocomm Security Management; Network Systems and Security (NP, SP, TP)
 Digital Entertainment Technology; Game & Entertainment Technology (NYP, TP)
 Digital Media; Interactive & Digital Media; Internet & Multimedia Development; Multimedia & Animation; Multimedia Computing; Multimedia Technology; (NP, RP, SP, TP)
 Engineering Informatics (NYP, NP)
 Financial Business Informatics (TP)
 Games Design & Development (SP)
 Information Management; Information Technology; (NYP, NP, RP, SP, TP)
 Information Technology (Mobile Computing); Mobile & Wireless Computing; Mobile Business Solutions (NP, TP)
 Internet Computing (TP)
 Internetworking & Communications (NP)
 IT Service Management (RP)
 Music & Audio Technology (SP)

MARITIME

Marine & Offshore Technology (NP)
 Marine Engineering (SP)
 Maritime Transportation Management (SP)
 Nautical Studies (SP)

MEDIA & DESIGN

Apparel Design & Merchandising (TP)
 Communication and Information Design (RP)
 Creative Media Design; Visual Communication (NYP, SP, TP)
 Design for Interactivity (RP)
 Digital Media Design; Digital Visual Effects; Film, Sound & Video; Motion Graphics & Broadcast Design; Moving Images (NYP, NP, TP)
 Environment Design (TP)
 Industrial Design; Product & Industrial Design (NYP, TP)
 Interactive Media Design (TP)
 Interior Architecture & Design; Interior Design; Space & Interior Design (NYP, SP, TP)
 Mass Communication; Media & Communication; New Media (NP, RP, SP)
 Sonic Arts (RP)
 Technology and Arts Management (RP)