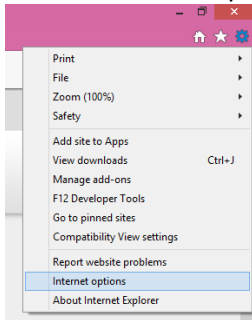


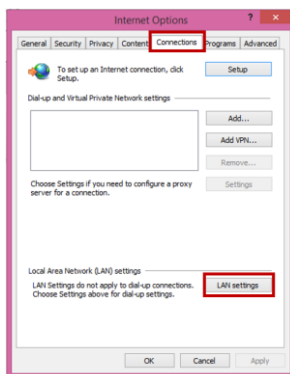
Instructions to change the proxy setting from the Internet browser (For staff, using TP issued device)

Internet Explorer

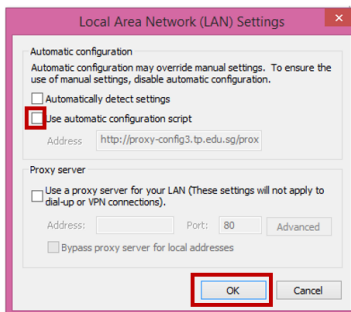
1. Click on Internet Options



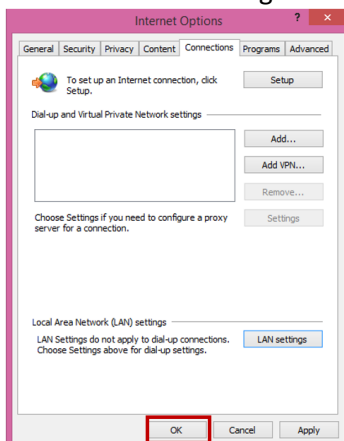
2. Click on Connections tab, then LAN settings



3. Uncheck the box "Use automatic configuration script" and click on OK



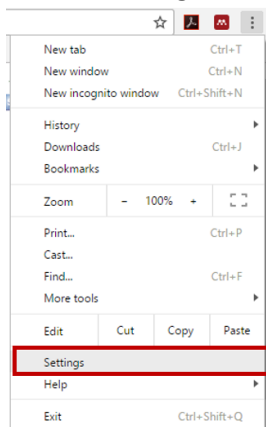
4. Click on OK. Close the window and refresh your browser. Try accessing the Singapore Standards database again.



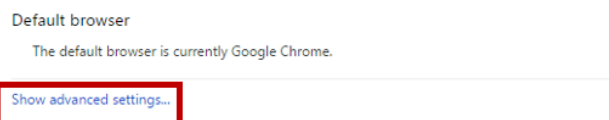
Note: You do not have to revert the proxy setting after making the above changes.

Chrome

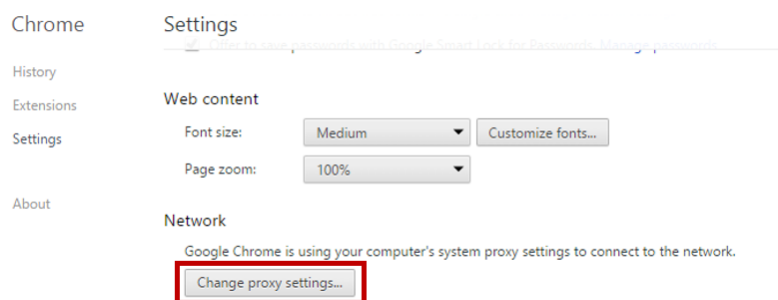
1. Click on Settings



2. Scroll down the page and click on Show Advanced Settings



3. Scroll down the page to Network. Click on Change Proxy Settings



4. Follow Internet Explorer steps 2-4 as shown in previous page.