



21 Tampines Avenue
Singapore 529757

WIFI CONFIGURATION FOR WINDOWS 10 USER GUIDE

This document and the system described in this document are the properties of TEMASEK POLYTECHNIC and no part of the document and the system may be reproduced or transmitted in any form or by any means, electronic or mechanical, for any purpose, without the expressed written permission of TEMASEK POLYTECHNIC.

TABLE OF CONTENTS

1. INTRODUCTION..... 3

2. REQUIREMENTS 3

 WHAT YOU WILL NEED TO CONNECT TO TP STUDENT WIRELESS NETWORK..... 3

3. CONFIGURATION OF WIRELESS SETTING 3

 3.1 USER GUIDE FOR WINDOWS 10 USER - AUTO CONFIGURATION..... 3

 3.2 USER GUIDE FOR WINDOWS 10 USER - MANUAL CONFIGURATION 5

1. INTRODUCTION

The objective of this documentation is to guide TP users on how to configure the TP wireless SSID “TP-STUDENT” on laptops running Windows 10 Operation System.

2. REQUIREMENTS

What you will need to connect to TP Student Wireless Network.

To connect to TP Wireless Network, you will need:

- A Windows 10 Laptop.
- TP Student Account.
-

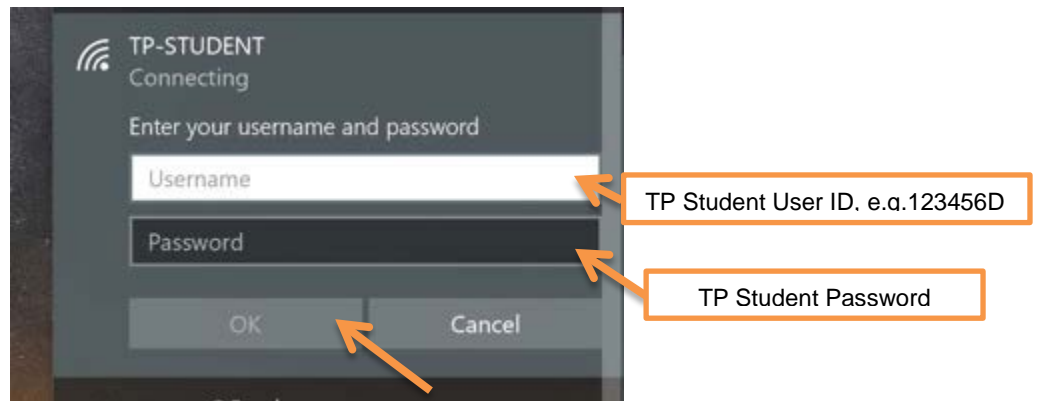
3. CONFIGURATION OF WIRELESS SETTING

3.1 User Guide for Windows 10 User - Auto Configuration

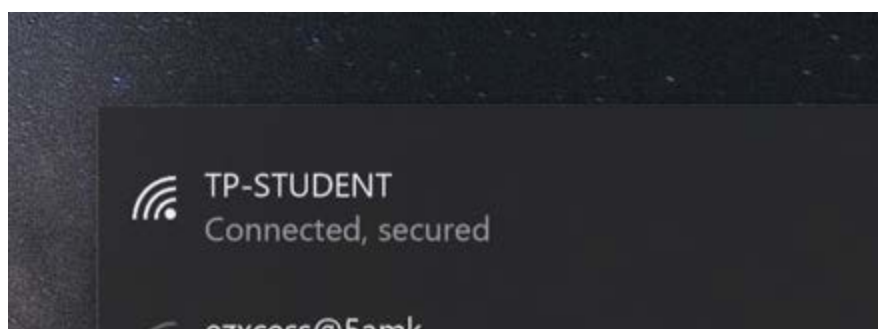
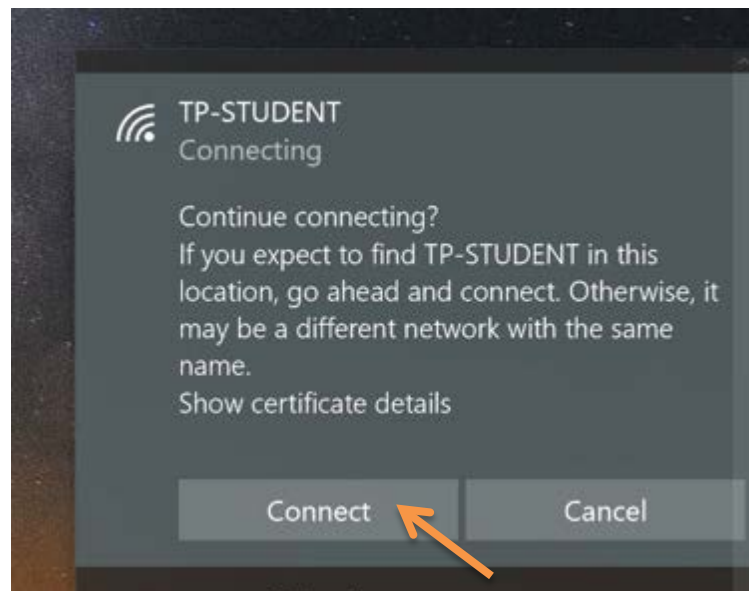
- 3.1.1 On the right bottom corner of your desktop, click on the icon  to bring up the wireless connection and select “TP-STUDENT”




3.1.2 Enter the TP-STUDENT credentials and click OK.



3.1.3 Click "Connect" on the warning to connect to the TP-STUDENT.



3.2 User Guide for Windows 10 User - Manual Configuration

3.2.1 Please open “Network and Sharing Center”. To do this, press the Windows key on your keyboard or click on the  icon to open the Start menu as shown in Figure 3.2A and type in ‘network and sharing’. Now click “Network and Sharing Center”.

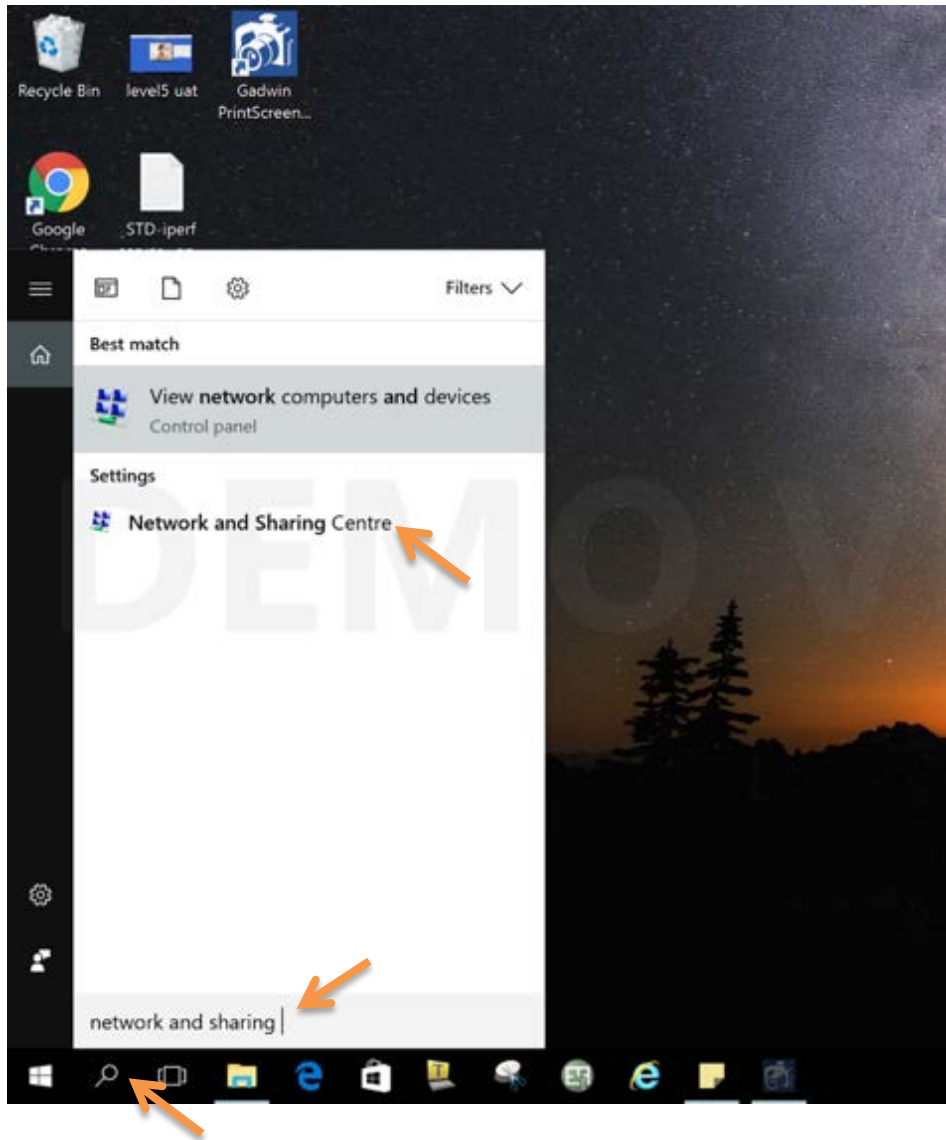


Figure 3.2A

3.2.2 Click “Set Up a new Connection or network” as shown in Figure 3.2B

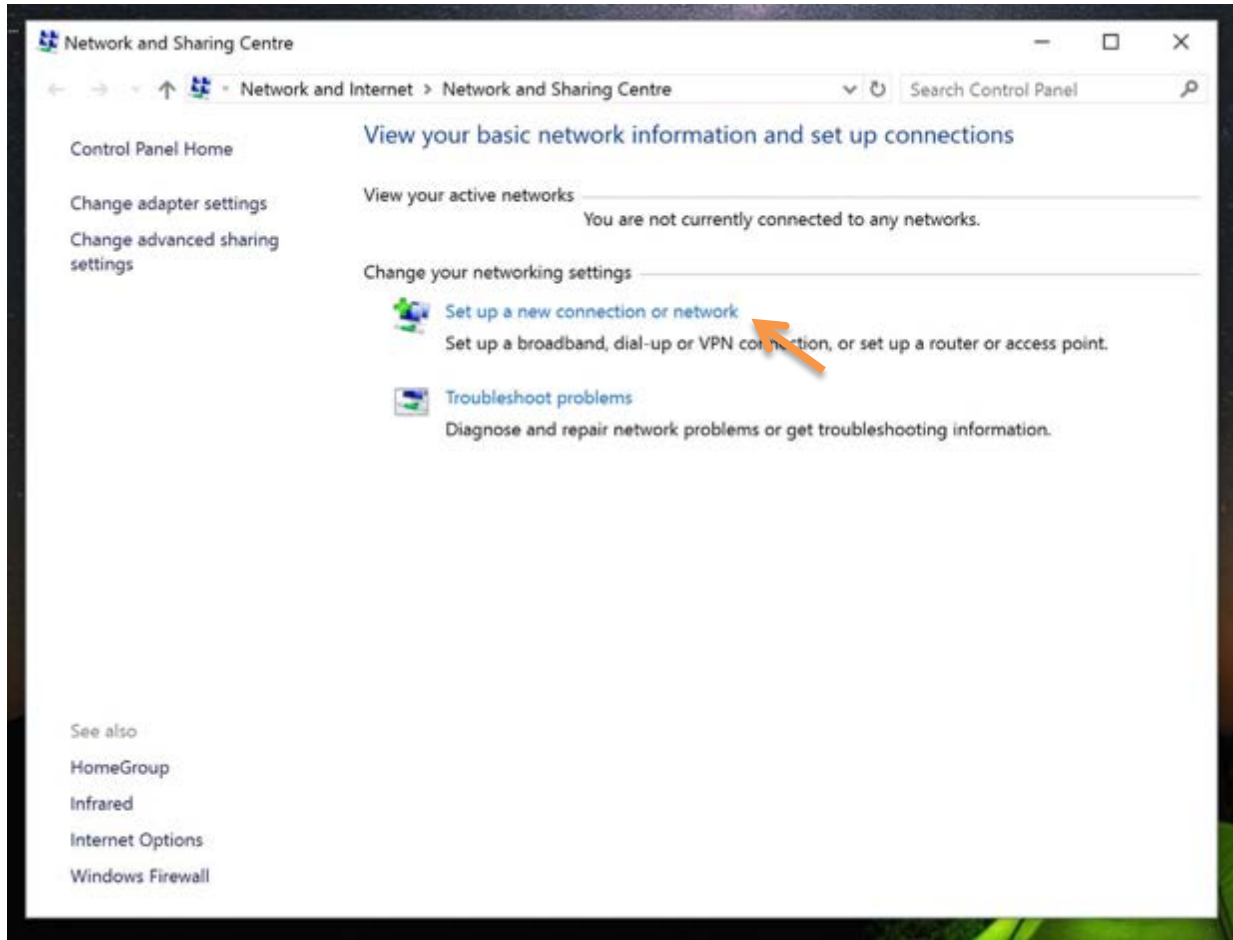


Figure 3.2B

3.2.3 In the new pop-up window, select “Manually connect to a wireless network” and click “Next”. Please refer the Figure 3.2C

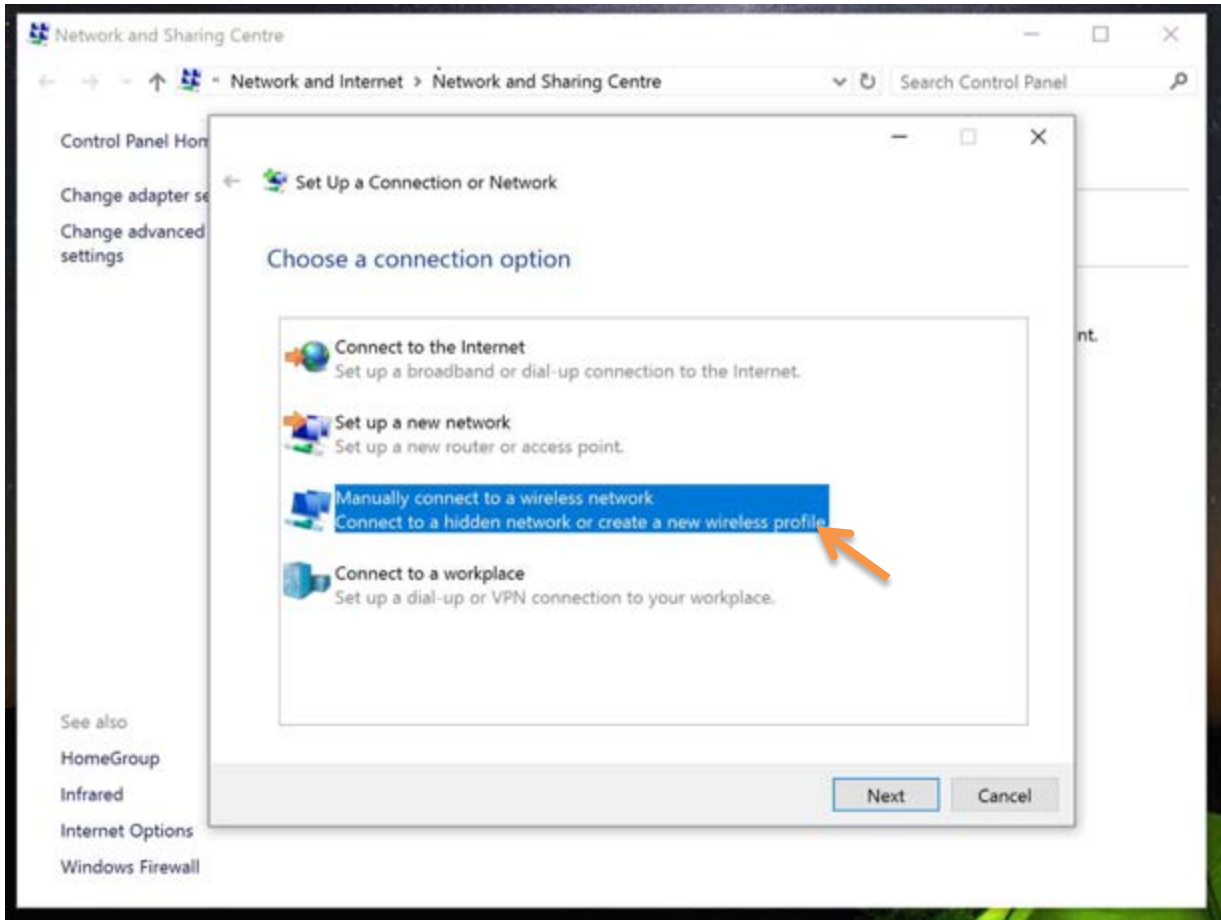


Figure 3.2C

3.2.4 Type in “TP-STUDENT” on the Network name and select “WPA2-Enterprise” on Security type and click “Next” to continue as in Figure 3.2D

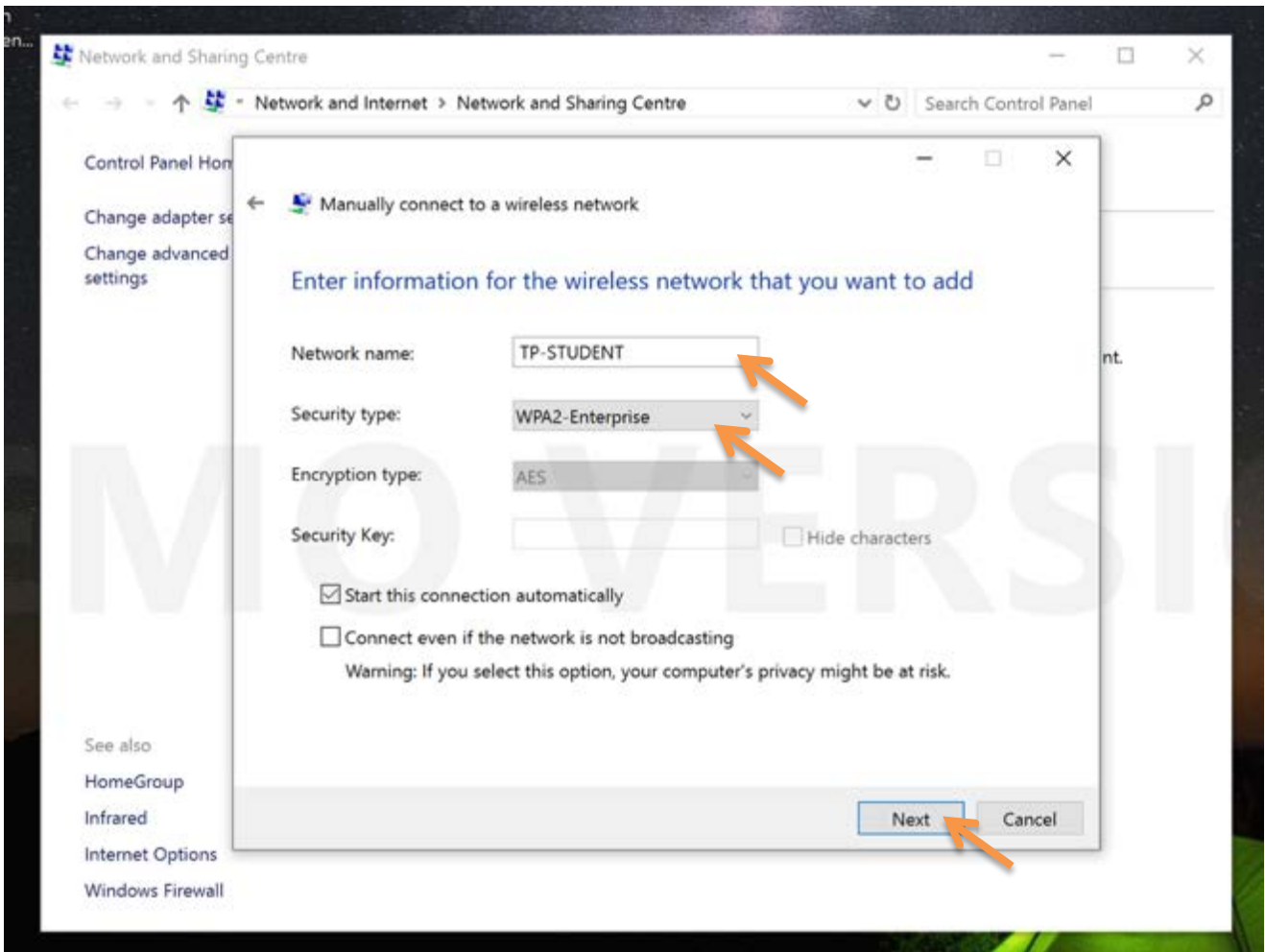


Figure 3.2D

3.2.5 “TP-STUDENT” is now successfully added. Now click “Change connection settings” as in Figure 3.2E.

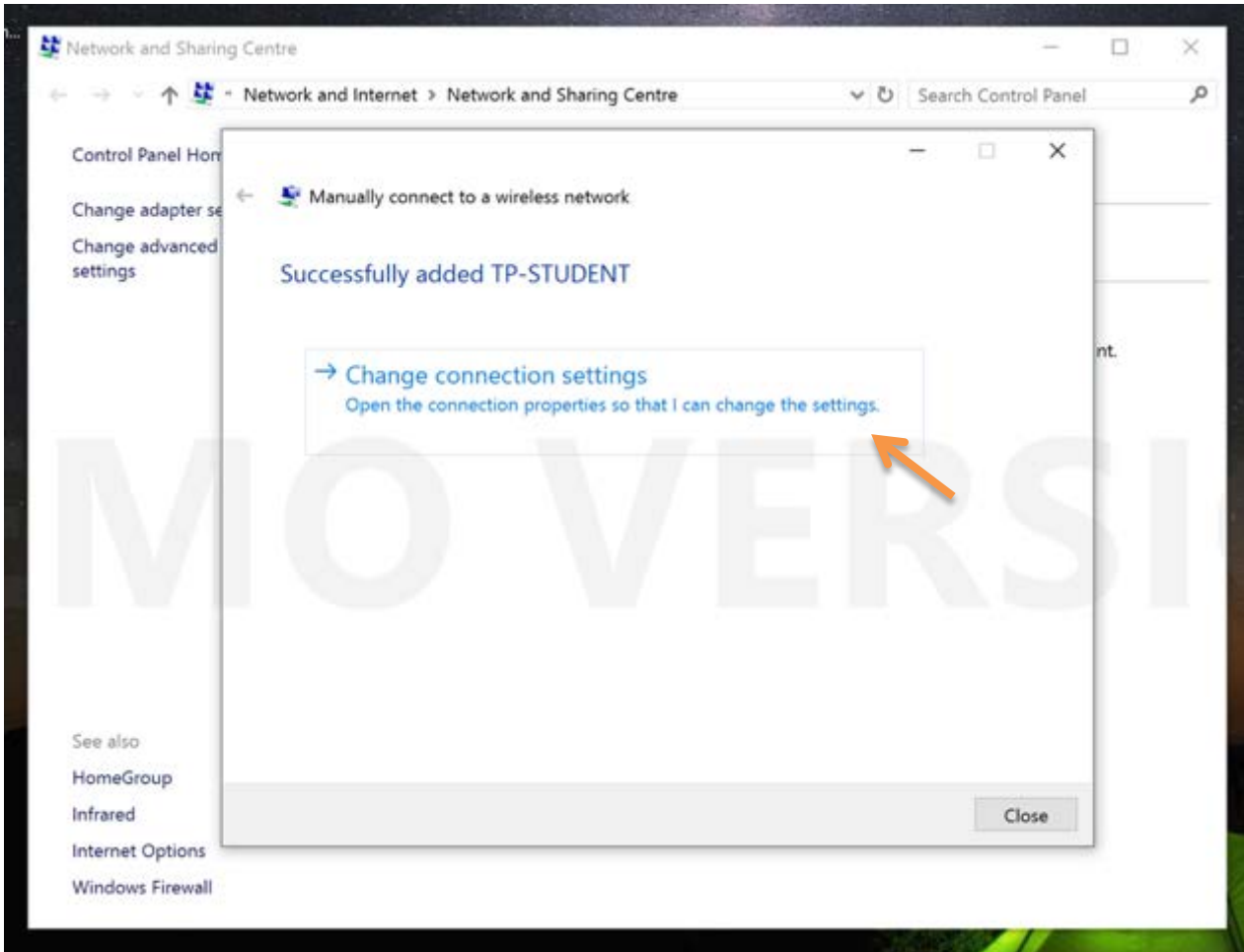


Figure 3.2E

- 3.2.6 Select the “Security” tab under “TP-STUDENT Wireless Network Properties” and click “Settings” as shown in Figure 3.2F

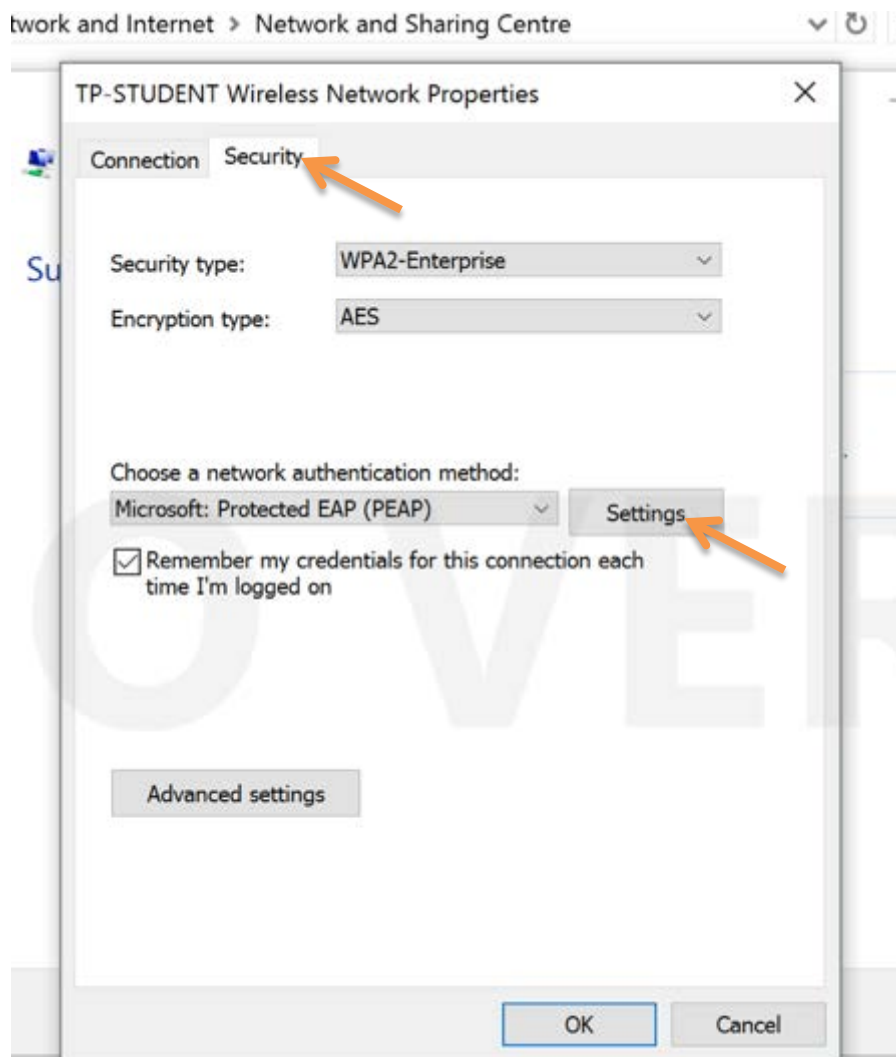


Figure 3.2F

3.2.7 Under “Protected EAP Properties”,

Check “Verify the server’s identity by validating the certificate” and click OK.

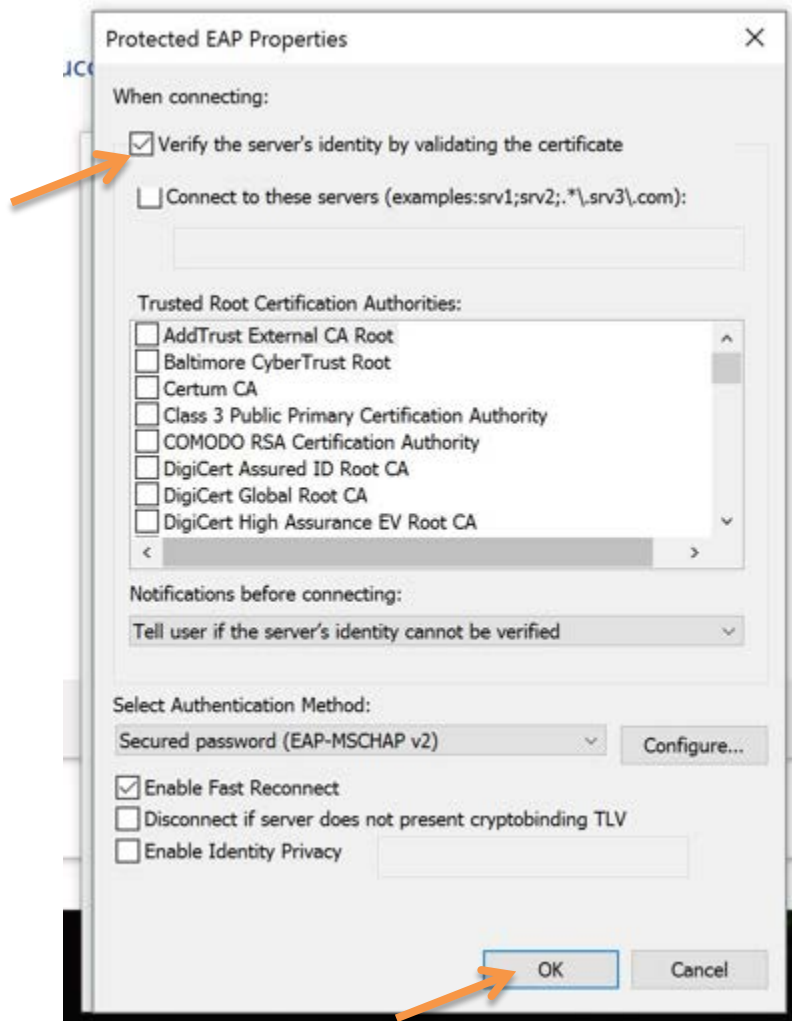


Figure 3.2G

- 3.2.8 Click on “advanced setting” as show in Figure 3.2J
 In the new window, **Check** “Specify Authentication mode” and select “User authentication”
 from the drop-down menu and click OK until all windows are closed as show in figure 3.2H

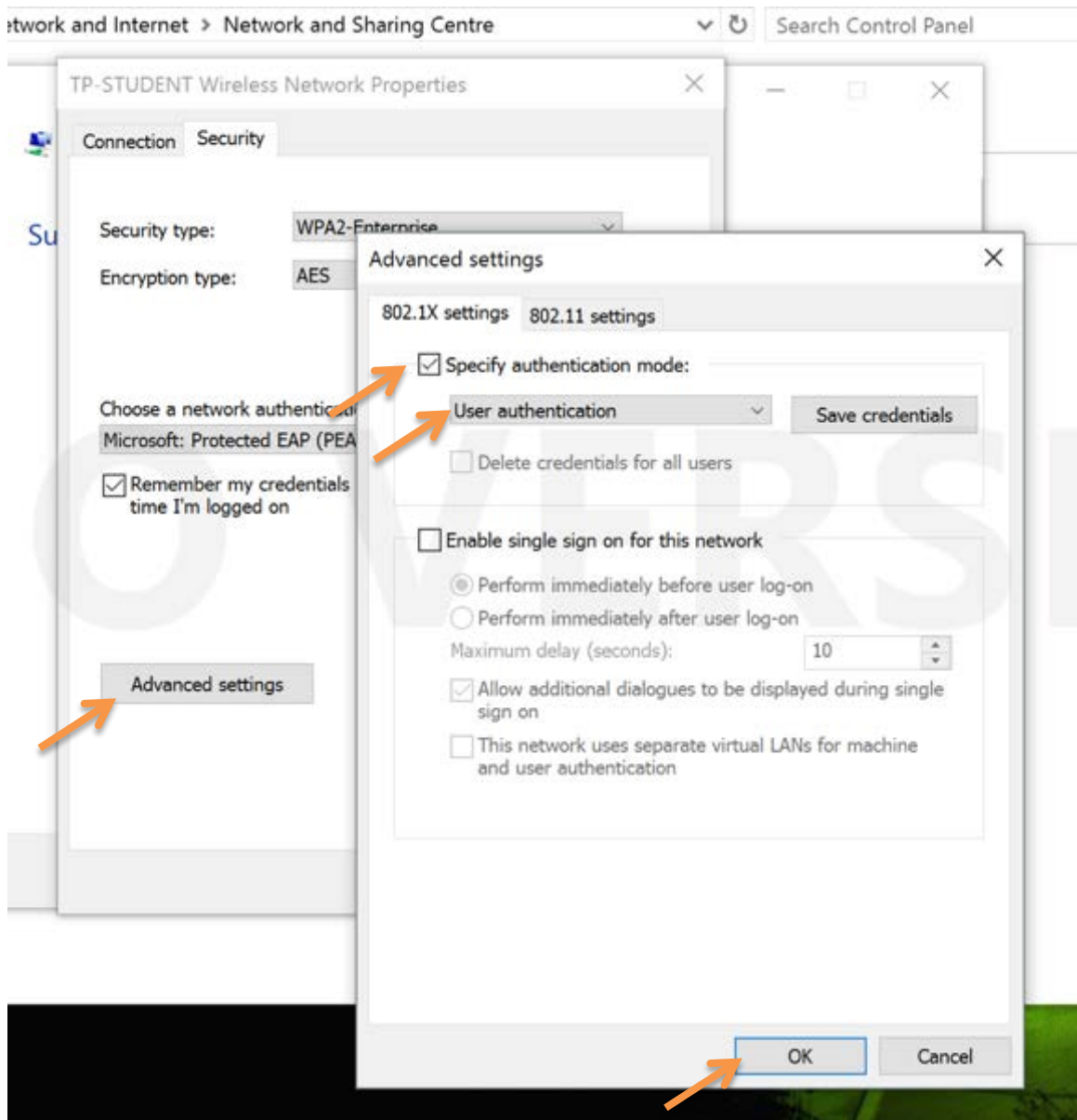


Figure 3.2H

3.2.9 In the new Pop-up window, type in your TP STUDENT credentials and click “OK” to connect to “TP-STUDENT” network as show in Figure 3.2I

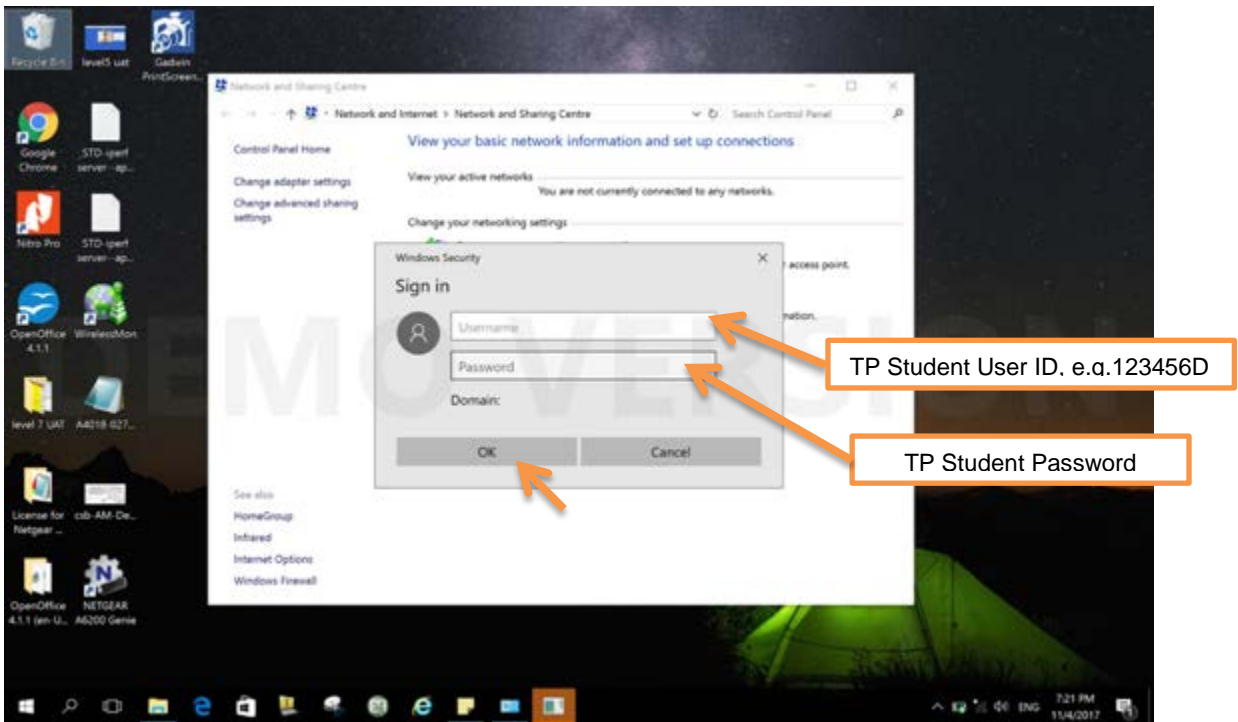


Figure 3.2I

