

# WIRELESS PRINTING FROM YOUR LAPTOP (Mac OS X)

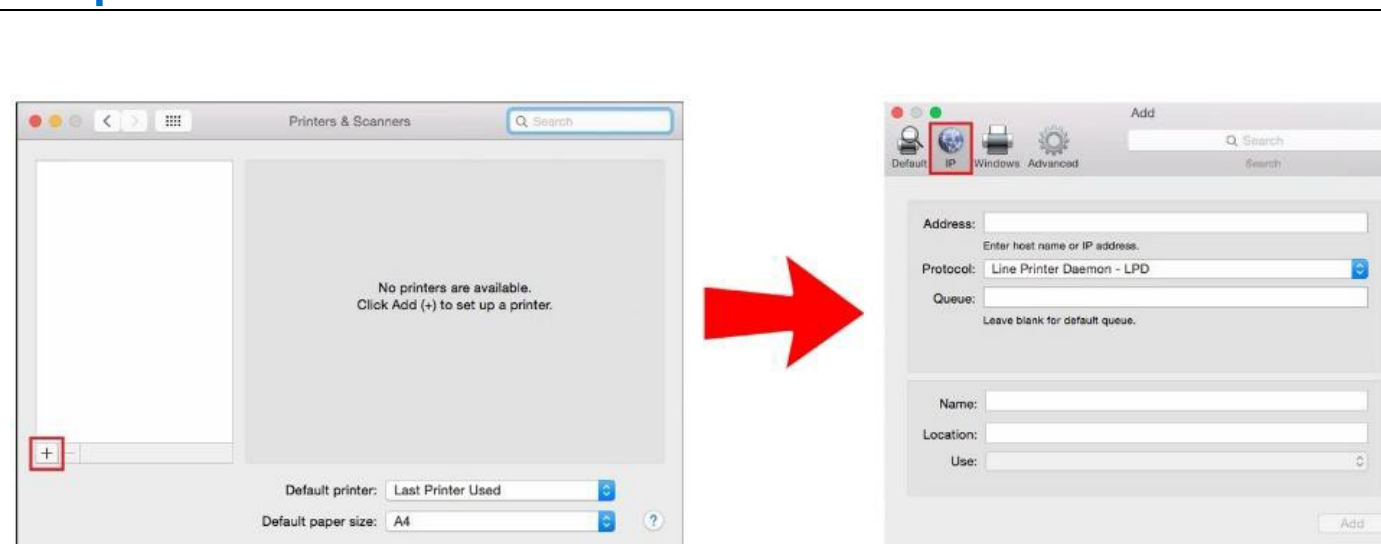
Please ensure your LAPTOP is connected to TP-STUDENT wifi

## Step 01: System Preference



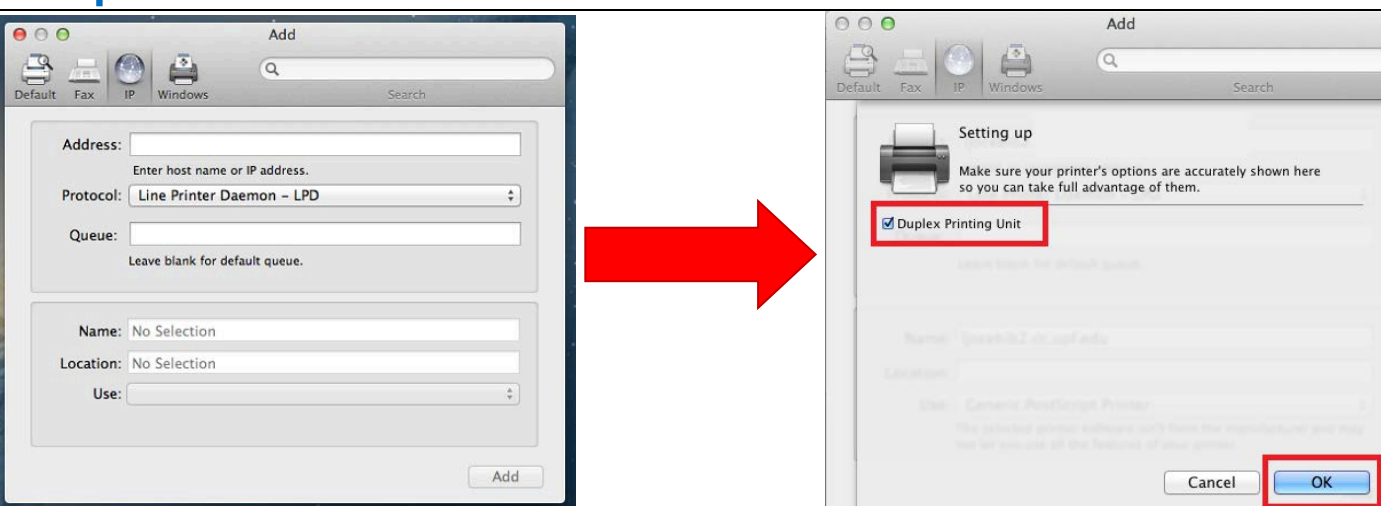
- Select System Preference
- Double Click Printers & Scanners

## Step 02: Printers and Scanners



- Click **[+]** Button
- Type the following:
  - Address : [sct-ps](#)
  - Protocol : [Line Printer Daemon - LPD](#)
  - Queue : [MONO-A4](#)  
: [MONO-A3](#)  
: [COLOR-A4](#)  
: [COLOR-A3](#)
  - Name : [MONO-A4](#)  
: [MONO-A3](#)  
: [COLOR-A4](#)  
: [COLOR-A3](#)
  - Location : [TP](#)
  - Use : [Generic PostScript Printer](#)

## Step 03: Install IP Printer in LPD Protocol



- Click **Add**
- Tick **Duplex Printing Unit**
- Click **OK**

**\*\*Repeat Steps 1 to 3 to add the rest of the printer drivers.**

## Step 04: Open your document and send your print jobs to the installed printer

## Step 05: Proceed to the Print Release Station to release your print jobs



- ❖ On the Print Release Station, type in **"guest"** to login, and search for your document.