



21 Tampines Avenue  
Singapore 529757

## **IT Services Department**

### **Temasek Polytechnic User Guide for Installing Adobe CC into Student's Notebook (BYOD)**

## Contents

1. Overview .....	3
2. Installing Adobe CC into your device .....	3
3. List of software available in Adobe CC .....	8
4. Contact Us .....	9

## 1. Overview

The guide serves to in helping user to install adobe CC into student's notebook (BYOD).

## 2. Installing Adobe CC into your device

This is a step-by-step type of topic you can follow the example below.

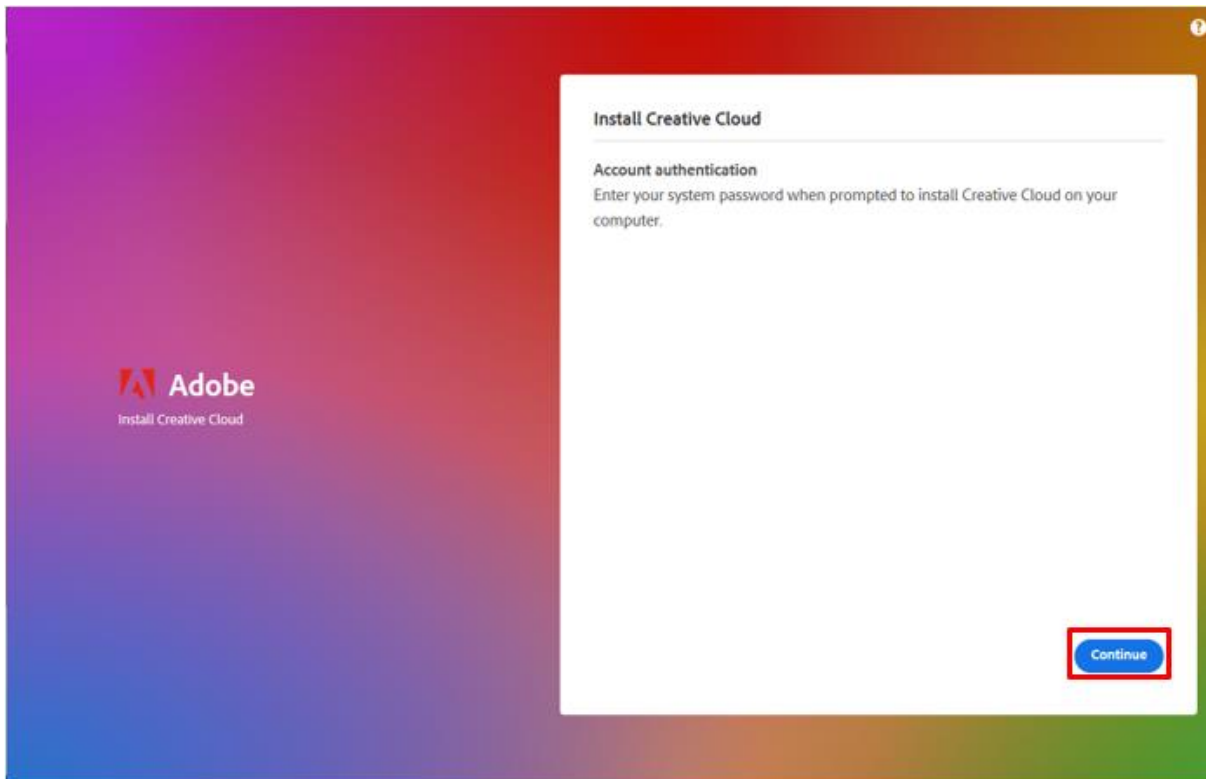
**Step 1:** Launch your internet browser.

**Step 2:** Go to <https://creativecloud.adobe.com/apps/download/creative-cloud> and click "Download Creative Cloud".

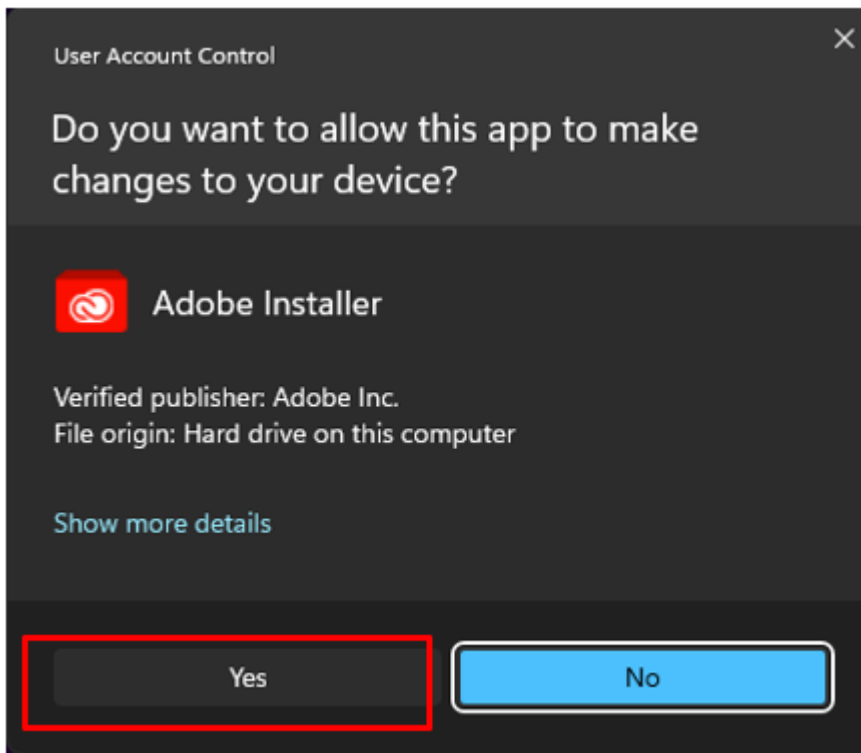


**Step 3:** Run the installer.

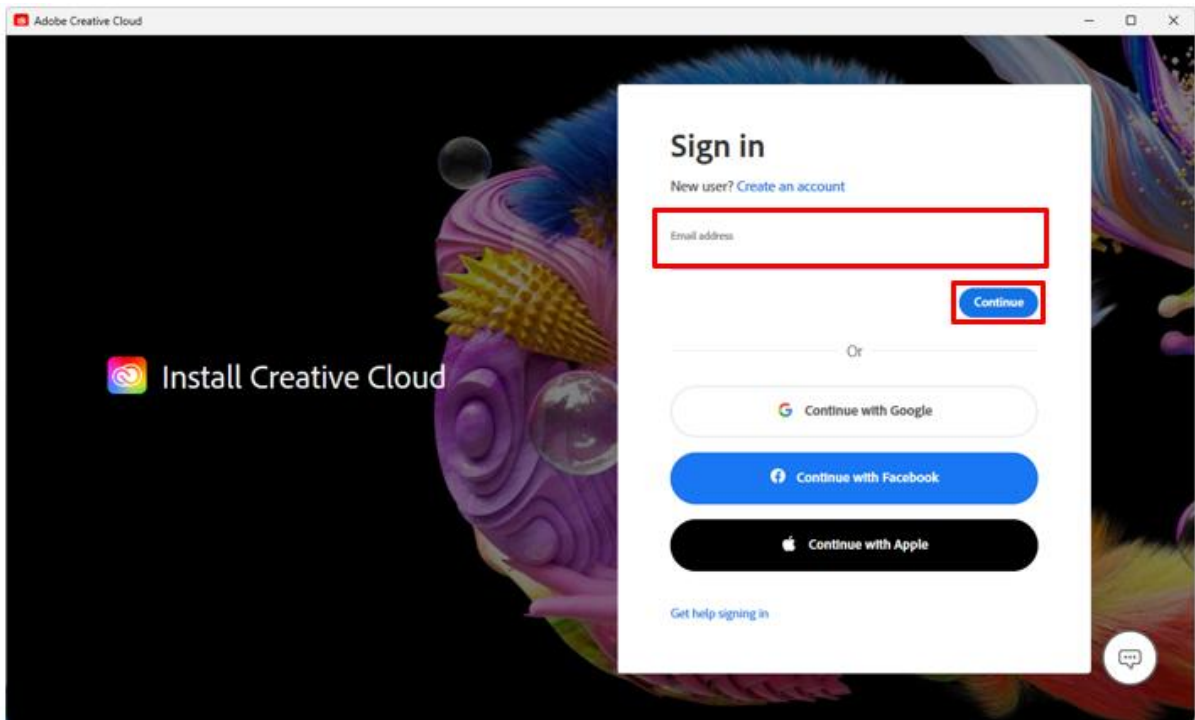
**Step 4:** You will see this page, click **“Continue”**.



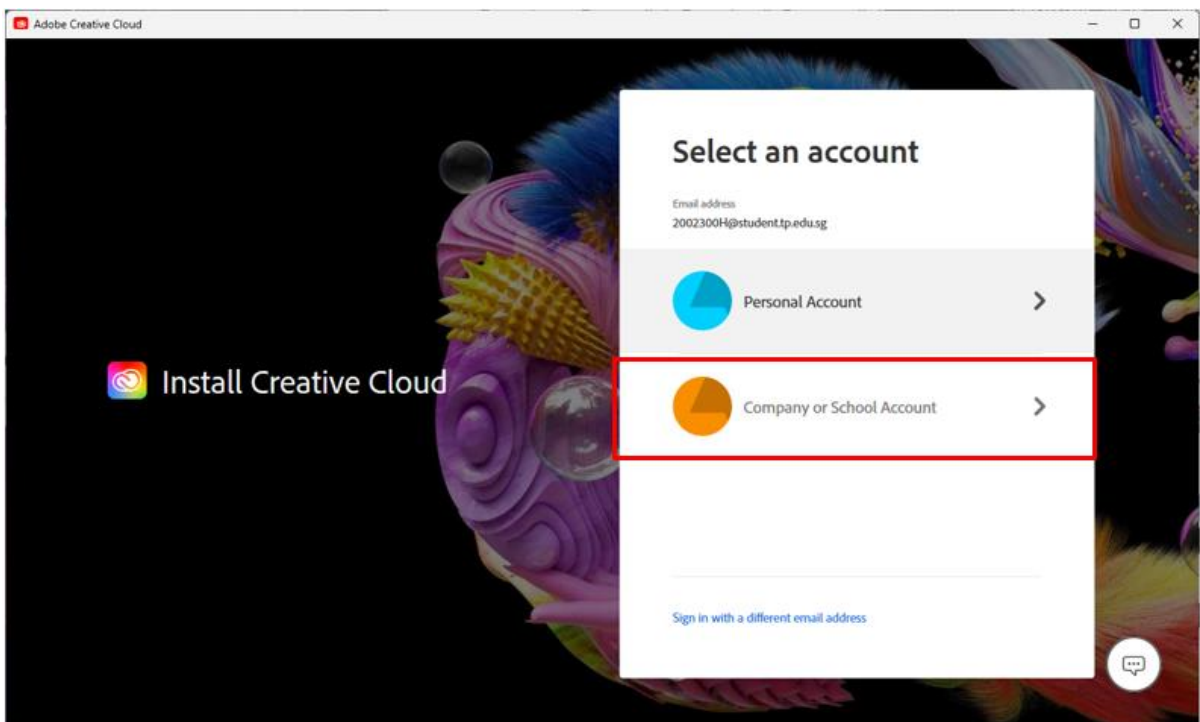
**Step 5:** Select **“Yes”**.



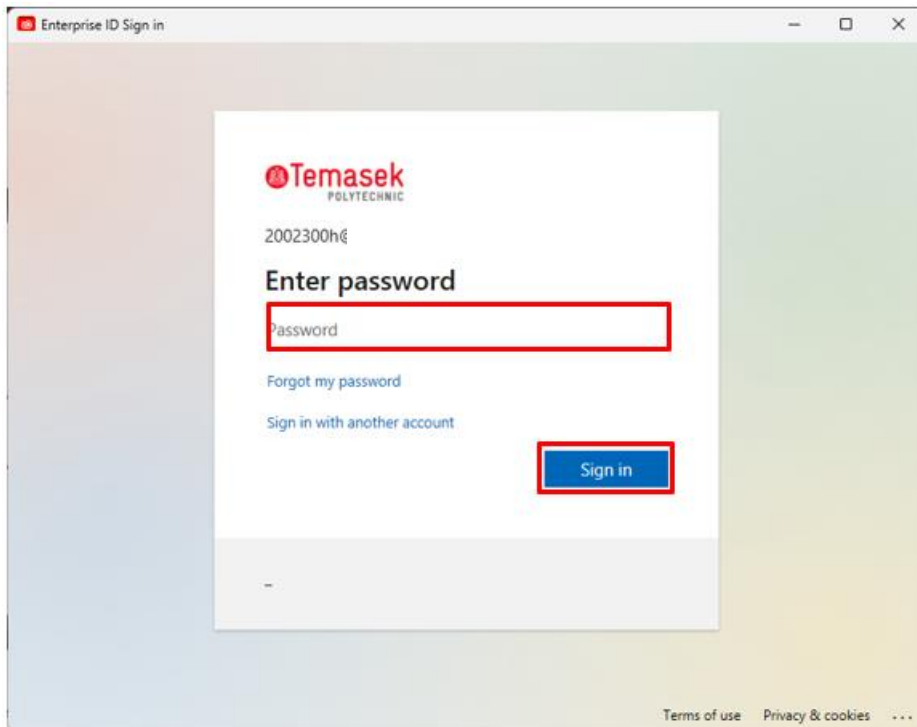
**Step 6:** You will be prompted to sign in. Key in your student email address at the email address line. Your student email address would be <admin no.>@student.tp.edu.sg. After that, click **“Continue”**.



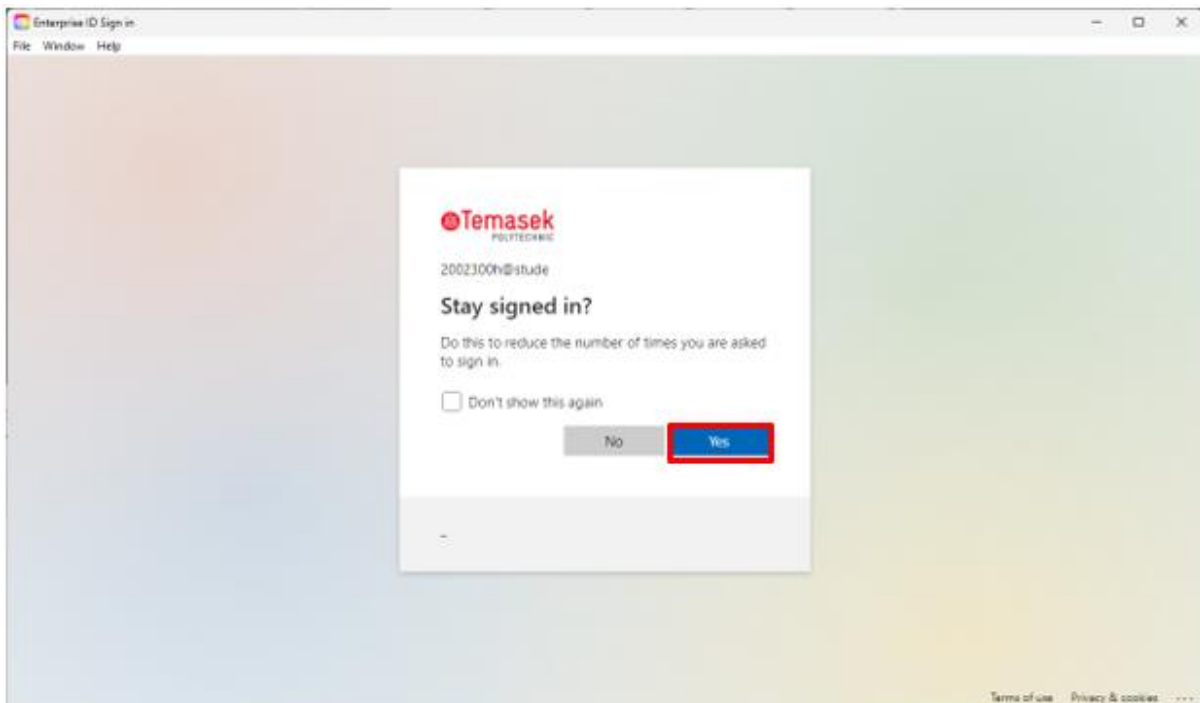
**Step 7:** Click **“Company or School Account”**.



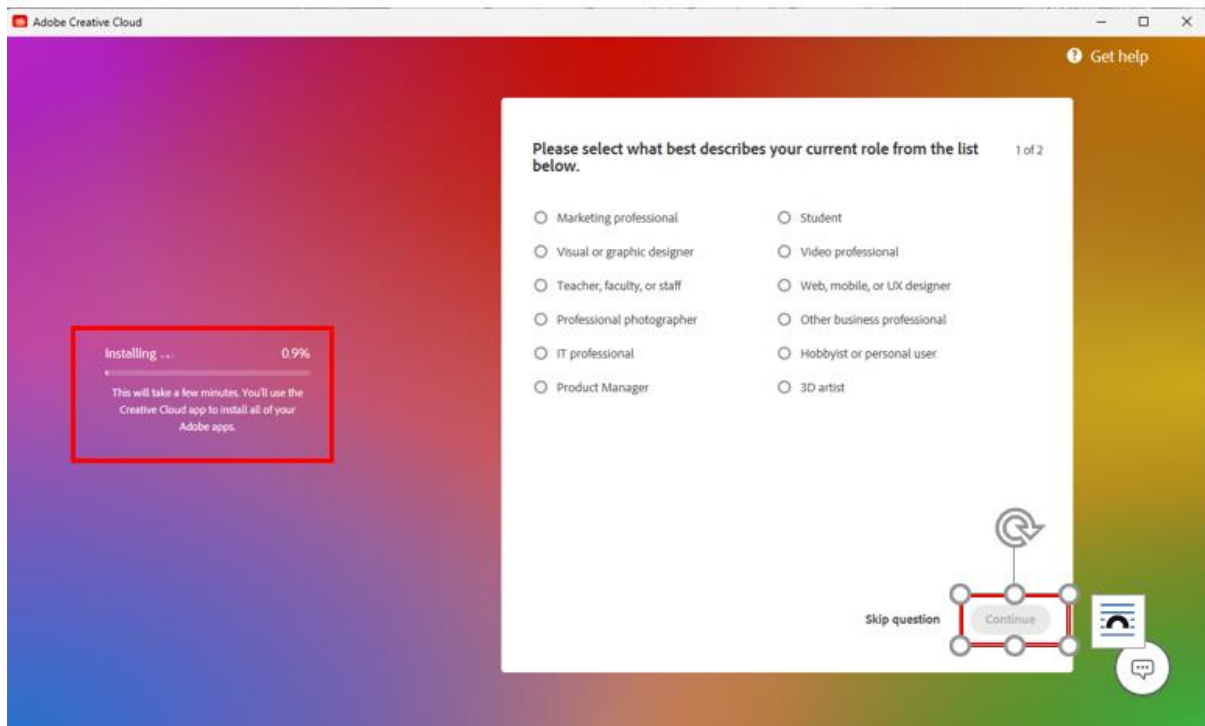
**Step 8:** Type in your password and click **“Sign in”**. The default password is TP<barcode number>@#&.



**Step 9:** Select **“Yes”**.

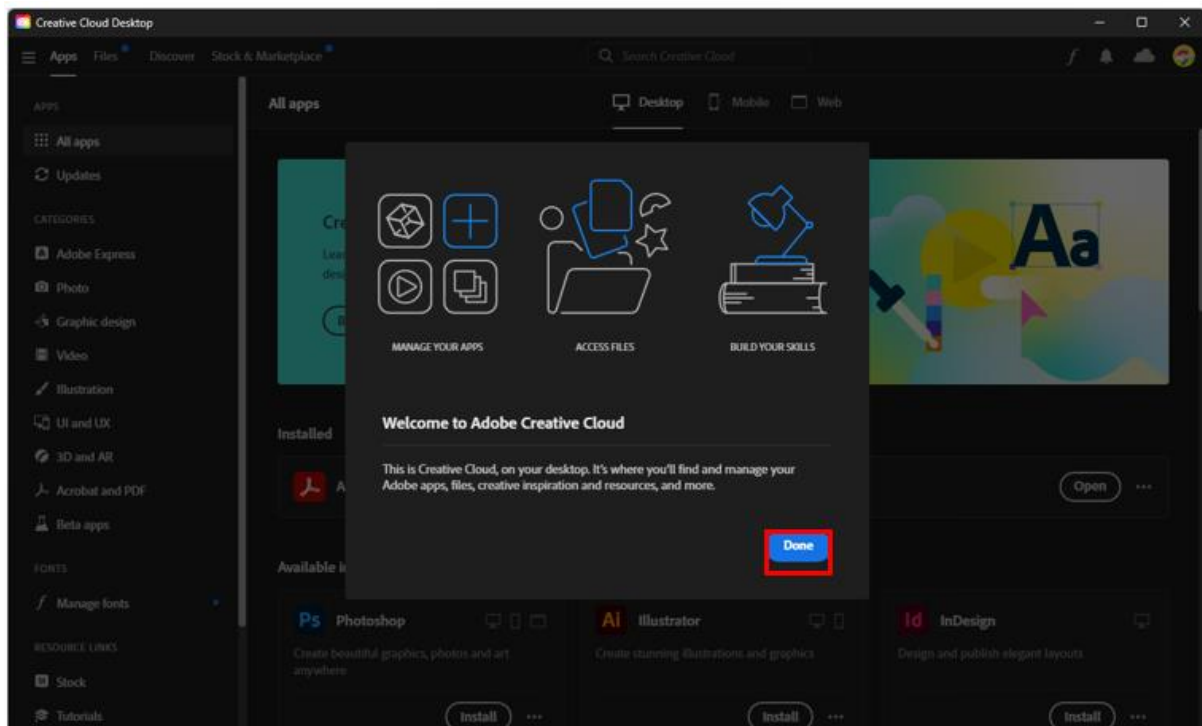


**Step 10:** You are now installing Adobe CC. There may be questions prompted on your screen while waiting for Adobe CC to install. If you do not want to answer the questions, you may select **“Skip question”**.

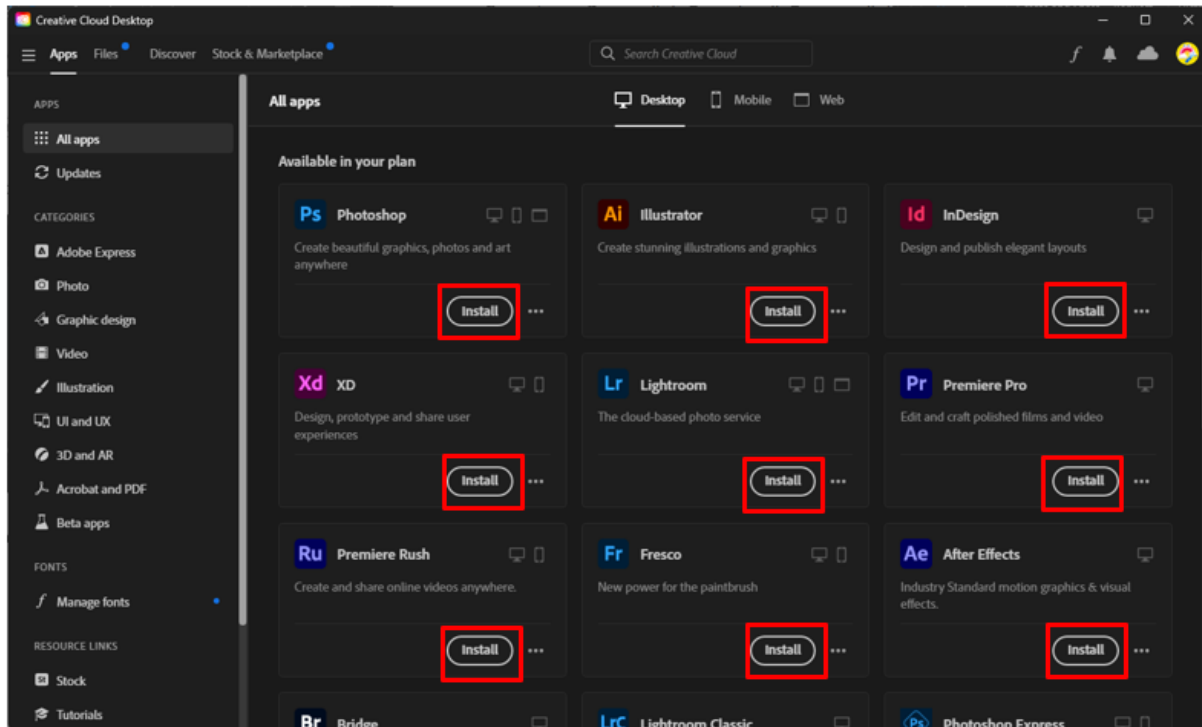


**Step 11:** Once Adobe CC is successfully installed, it will open automatically.

**Step 12:** Select **“Done”** and you will now be able to access Adobe CC.



**Step 13:** If you wish to install any Adobe CC software, simply click “Install” under the software that you wish to install.



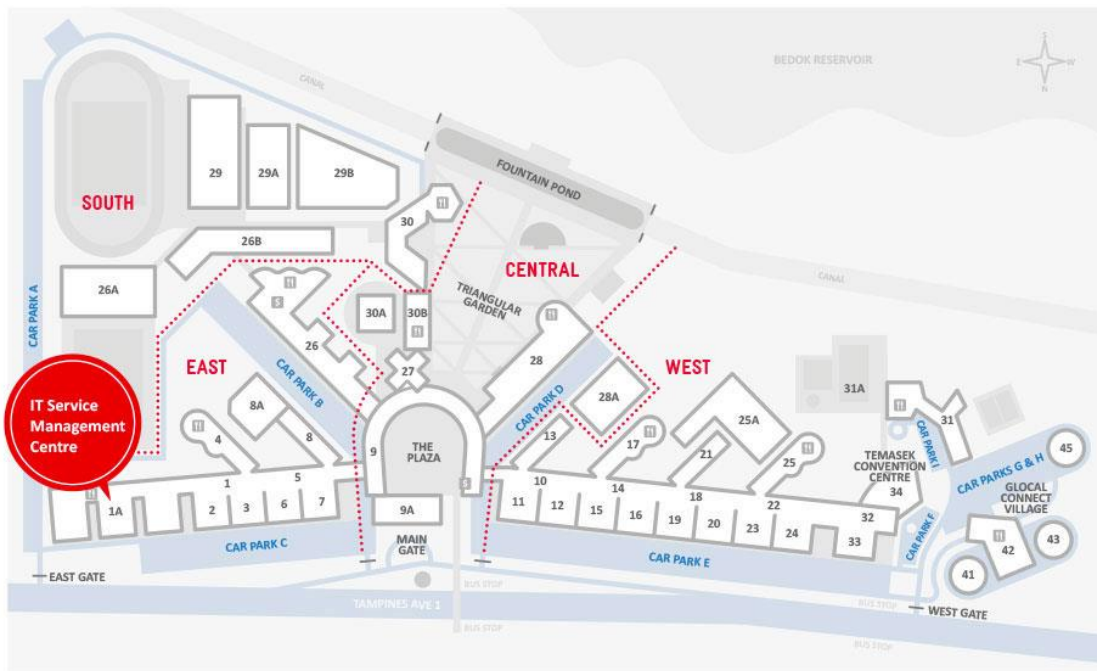
### 3. List of software available in Adobe CC





#### 4. Contact Us

For any further enquiries or issues, contact TP's IT Service Management (ITSM) Centre at 6780 5933 or email at [itsm@tp.edu.sg](mailto:itsm@tp.edu.sg). Our centre is located at East Wing Building, Block 1A, Level 4, Unit 02.



**IT Service Management Centre** East Wing Building, Block 1A, Level 04, Unit 02  
Locate us via lift lobby 57, 58, & 59 (turn right when exit the lift)

**CAMPUS MAP**

The operating hours of the Centre are:

**Mondays to Fridays:** 8.00am to 9.30pm (except for September vacation period where closing time will be at 6.30pm)

**Saturdays:** 8.00am to 1.00pm (except for September vacation period where ITSM Centre will be closed)