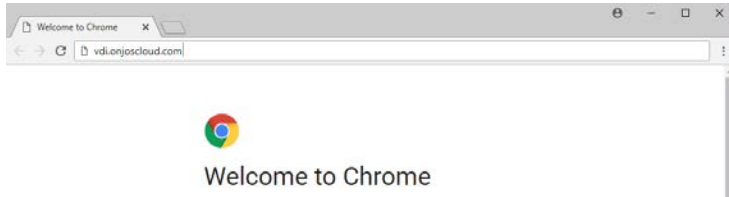


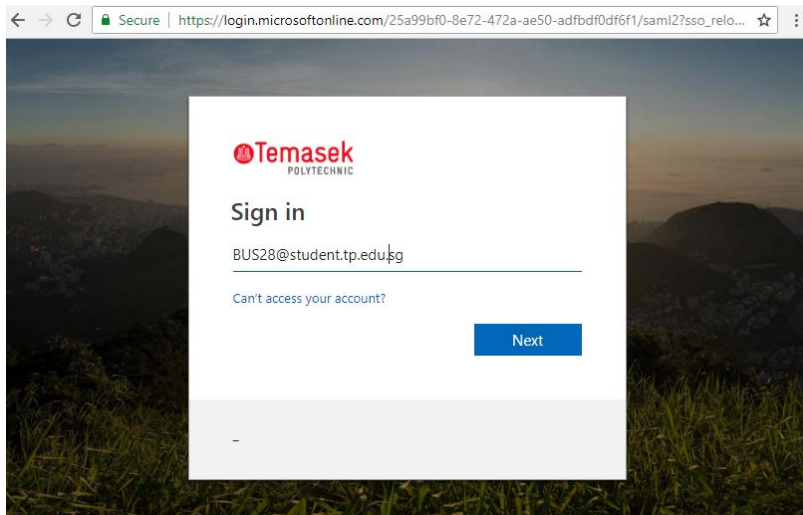
Accessing Temasek Polytechnic Cloud VDI

Below are the steps to login and access the Cloud VDI.

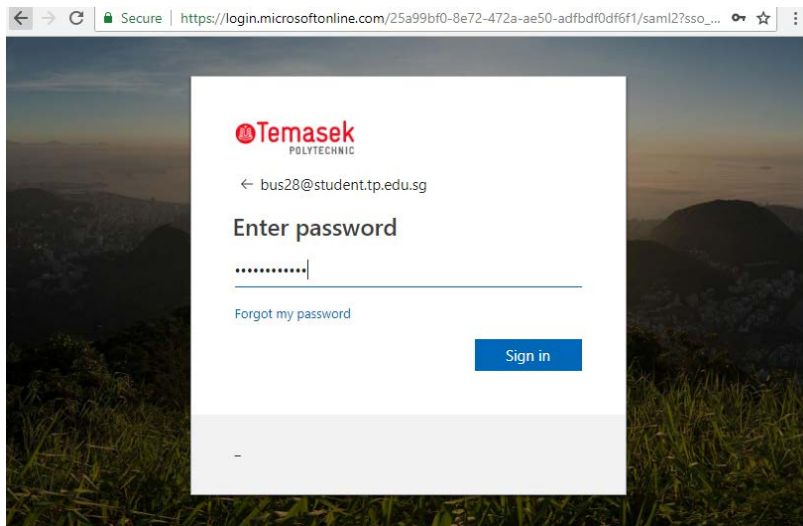
1. You may use any major browsers (Edge, Chrome, Safari, Firefox, IE) in Windows or Mac.
2. Due to SAML authentication, mobile device access to Cloud VDI will not be supported.
3. Browse to URL <https://vdi.onjoscloud.com>



4. It will redirect you to a Microsoft login page
Key in your username (e.g *studentid@student.tp.edu.sg* or *staffid@tp.edu.sg*)

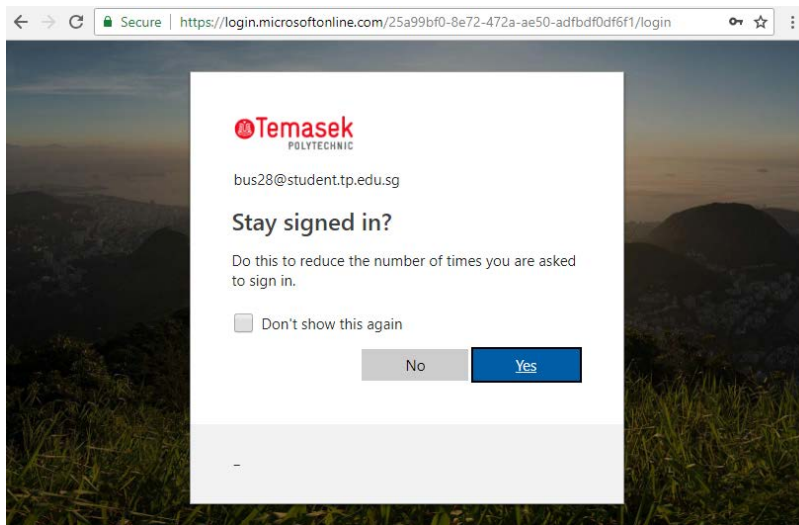


5. Key in your email password and click **Sign in**

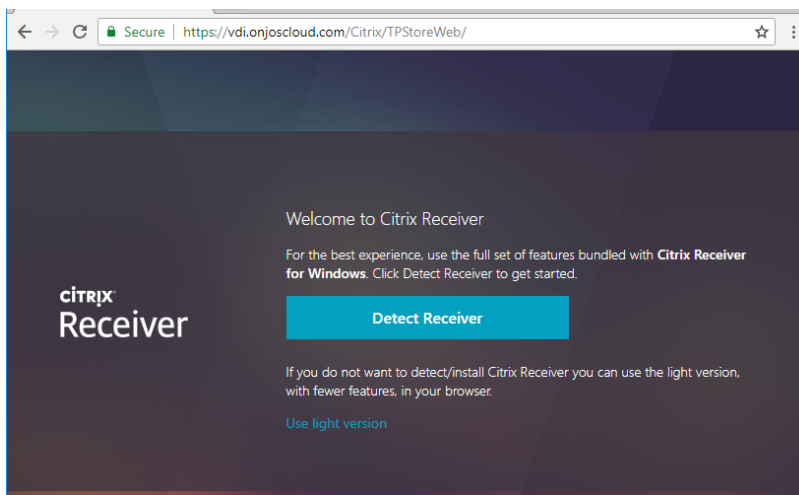


It may prompt you whether to Stay signed in?

If it is at public computer, e.g. Cyber Café, Select **NO**.

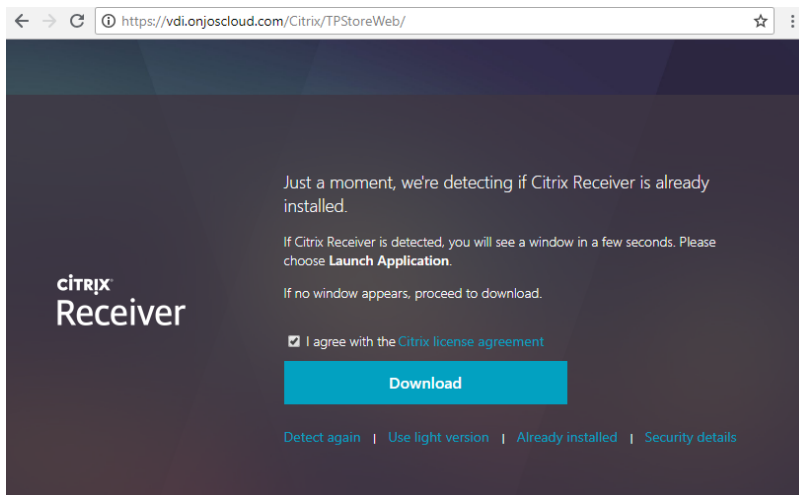


6. The following page will appear. Click **Detect Receiver**

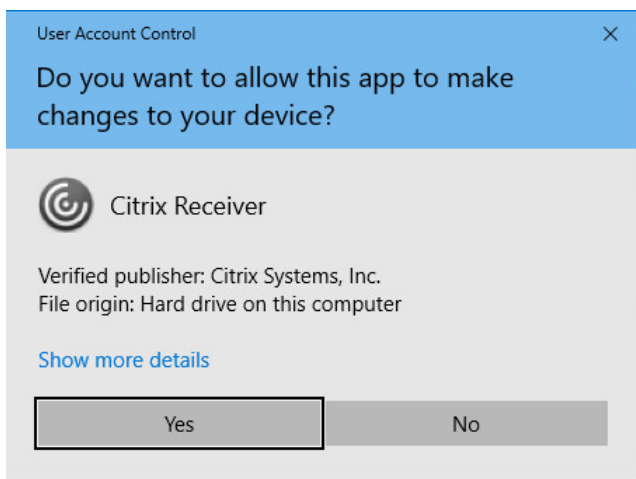


7. Check **"I agree with the Citrix licensing agreement"**

Click **Download**. *Steps 1 to 11 is only required the first time you access. Subsequently, proceed to step 12.*



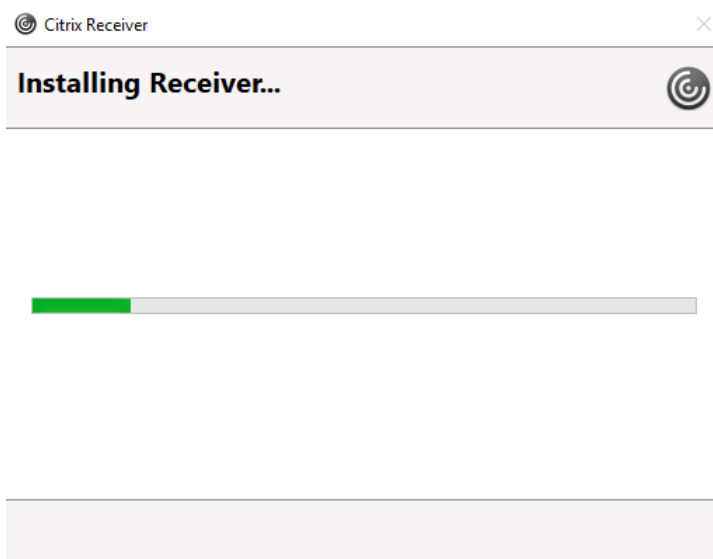
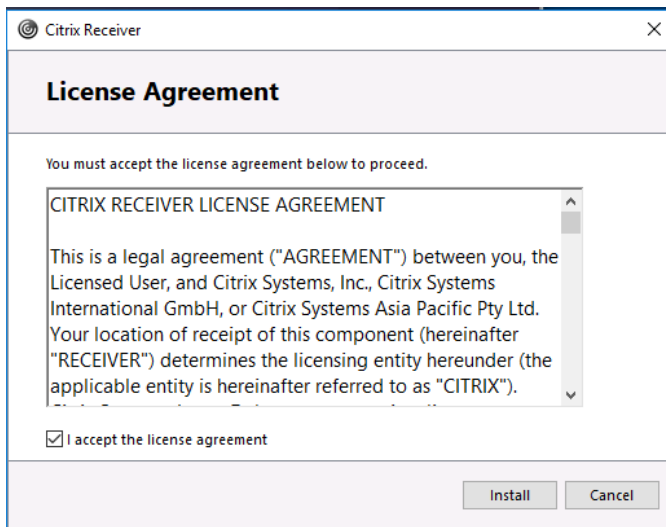
8. Run the downloaded file **CitrixReceiverWeb.exe**. **User Account Control** may pop up. Select **Yes** to install Citrix Receiver



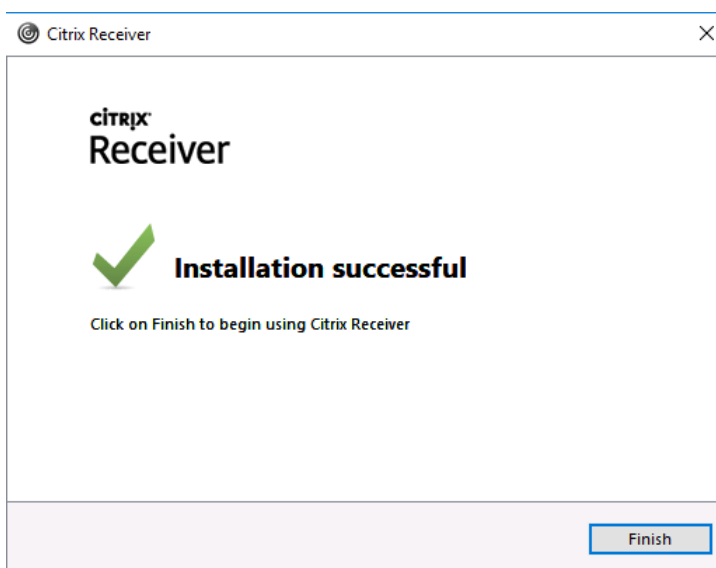
9. Click **Start**



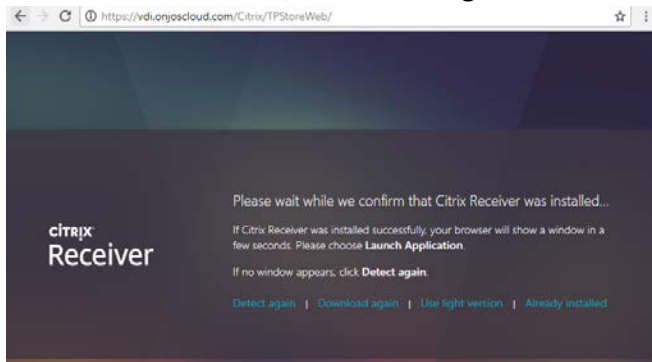
10. Click **Install**



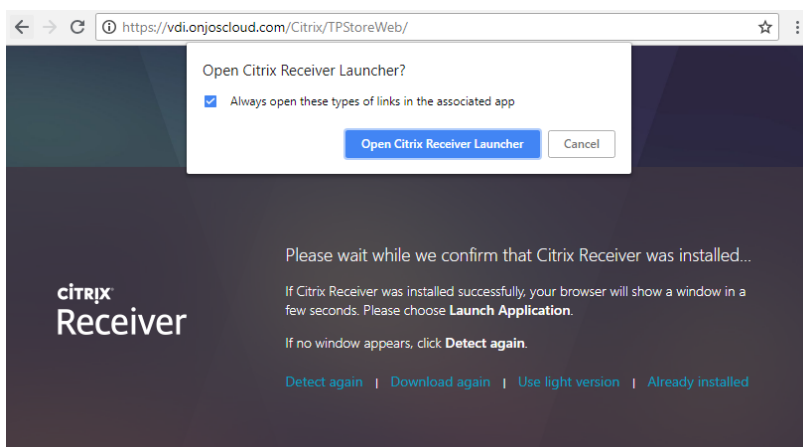
11. Click **Finish**



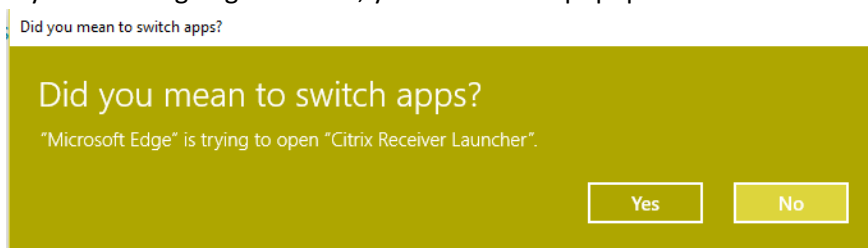
12. Switch back to browser; Click **Detect again**



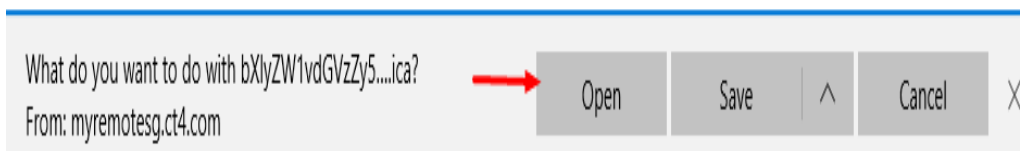
Check "Always open these types of links in the associated app"



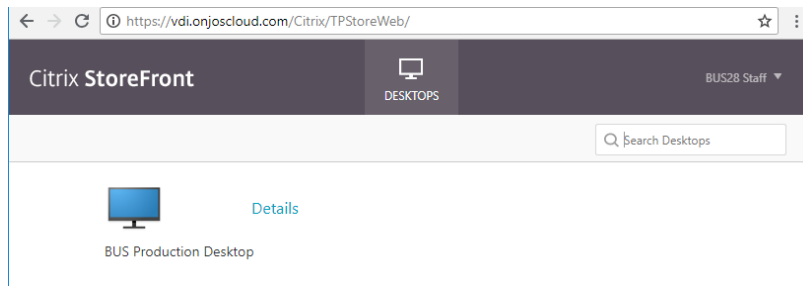
13. If you are using Edge browser, you will see the popup below. Click Yes.



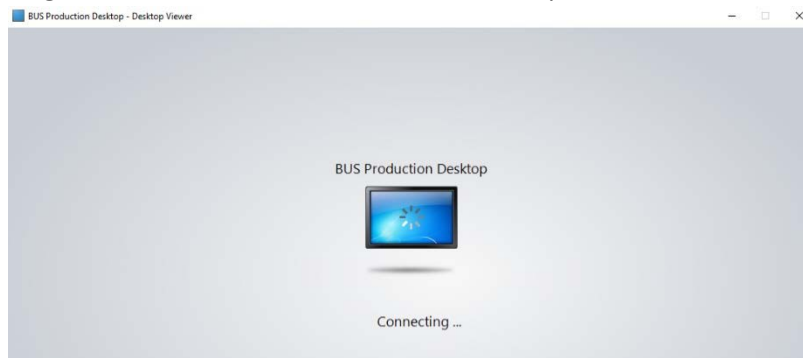
14. There may be prompt to run an ica file (depending on your browser settings). Click Open.



15. You will then be presented with desktop that is assigned to you.



16. **Single** click on the icon will launch the desktop.



~~ End ~~